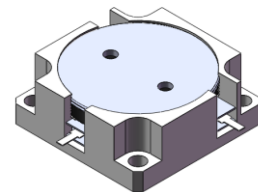




## DP0492C

### 2515MHz to 2675MHz Single-Junction Drop-in Circulator

REV.	DESCRIPTION	REVISOR	DATE	APPROVED
A	Creating datasheet	ZC.Wu	2021/6/1	Nick

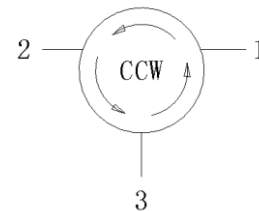


#### Applications:

- Wireless Infrastructure
- Power Amplifier

#### Features:

- Operating frequency range:2515MHz to 2675MHz
- Operating temperature range: -40°C to +90°C
- Storage temperature range: -40°C to +100°C
- BeOfree&RoHS compliant



Block Diagram



**Electrical Specifications:**

ITEM	SPECIFICATION	
Frequency	2515~2675	MHz
Direction	CCW	
Impedance	Typ: 50	$\Omega$
Insertion Loss (Max.)	0.20@25°C $\pm$ 5°C 0.25@-40°C ~+90°C	dB
Isolation (Min.)	25.0@25°C $\pm$ 5°C 23.0@-40°C ~+90°C	dB
Return Loss (Min.)	25.0@25°C $\pm$ 5°C 23.0@-40°C ~+90°C	dB
Power FWD/REV/PEAK	300/300/-	W
IMD (Max.)	-70@2x49dBm,spacing 5MHz	dBc
Impedance ,real	/	$\Omega$
Impedance ,imaginary	/	j $\Omega$

Notes:

1. Exposure to maximum rating conditions for extended periods may reduce device reliability. There is no damage to device with only one parameter set at the limit and all other parameters set at or below their nominal value. Exceeding any of the limits listed here may result in permanent damage to the device.
2. Performance is guaranteed under the conditions listed in this table and over the operating temperature range.

