

Travelling Merchant: \_\_\_\_\_

# DATASHEET

Standard:                     **DPAM12000003**                      
 \_\_\_\_\_

Plot			The Label
Drew	Audited	Approved	Stamp, please! Thanks!
Date: 2020.10.13			

## Guangdong Dapu Telecom Technology Co.,LTD

Bldg13-16,.N.Ind.Zone,SSL Industry Park, Dongguan City, Guangdong Province, China

TEL: 0086-0769-88010888 FAX: 0086-0769-81800098

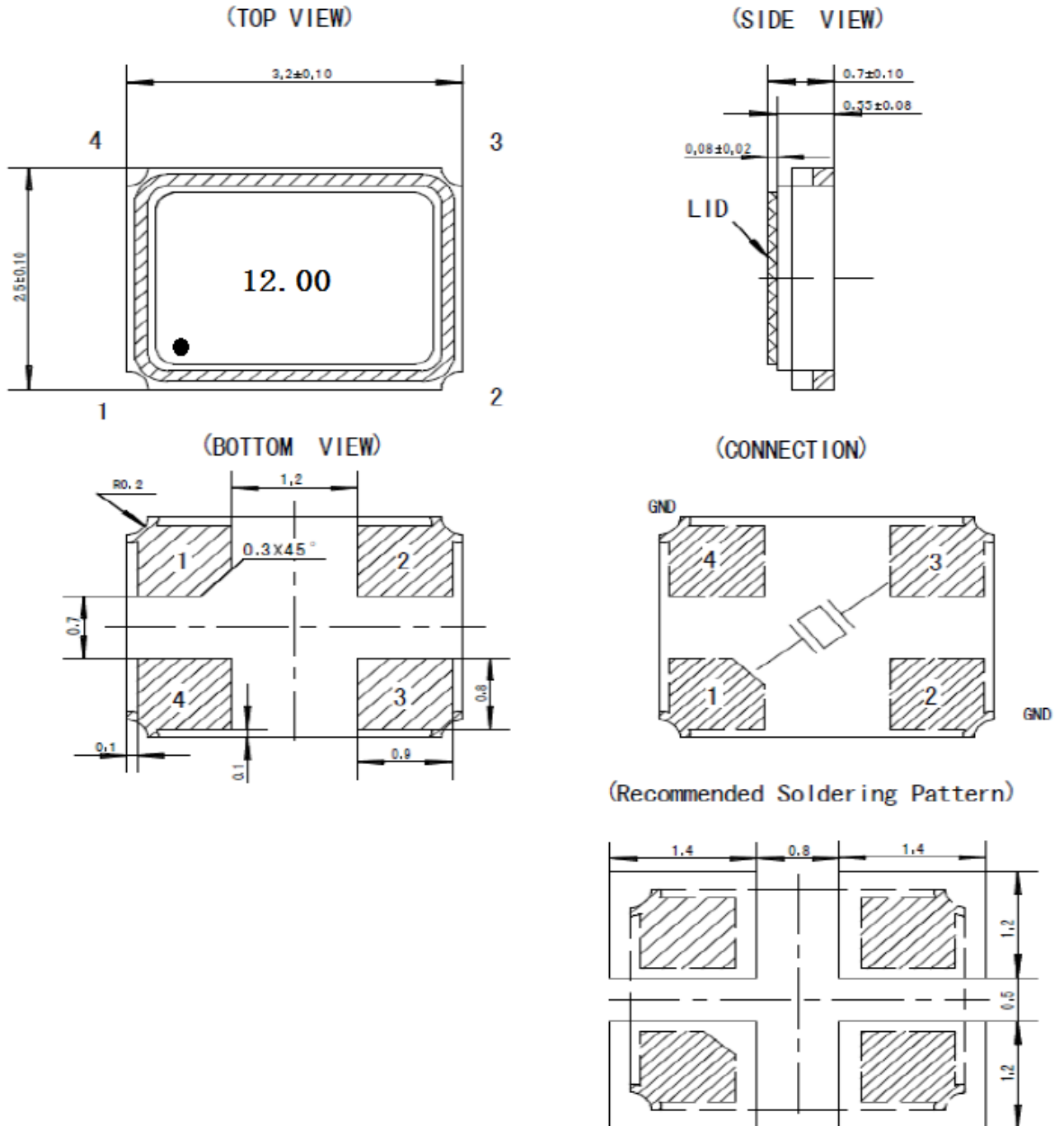


## 1、 Electrical Parameters

MODEL: DPAM12000003							
No.	Parameters	SYM.	Electrical Spec.				Notes
			Min.	Typ.	Max.	Units	
1	Nominal Frequency	FL	12.00			MHz	
2	Oscillation Mode	-	Fundamental				
3	Load Capacitance	LC		10		pF	
4	Initial Frequency Accuracy	-	-20		+20	$\times 10^{-6}$	
5	Frequency Stability	-	-20		+20	$\times 10^{-6}$	-40°C ~ +85°C
6	Operating Temperature	-	-40		+85	°C	
7	Insulation R	-	500			MΩ	DC100V
8	Aging	-	-3		+3	$\times 10^{-6}$	
9	Resonance Resistance				40	Ω	
10	Drive Level	DL		100		uW	
11	Shunt Capacitance C0	C0			2	pF	
12	Storage temperature range		-55		+125	°C	
13	ESD Level	Human Body Model,class2: 2000V to 4000V; ANSI/ESDA/JEDEC JS-001-2010					
		Machine Model, class B: 200V to 400V; JEDEC JESD22-A115C.					
14	Moisture Sensitivity Level	Level 2					
15	Vibration	Test Condition: 0.75mm ;acceleration:10g;10Hz~2000Hz, one cycle per 30 min, test 2 hour. (3 times for each 3 directions X , Y , Z). IEC 68-2-06 Test Fc.					
16	Shock	100g; 6ms; half sine wave (3 times for each 3 directions X , Y , Z),IEC 68-2-27 Test Ea/Severity 50A.					



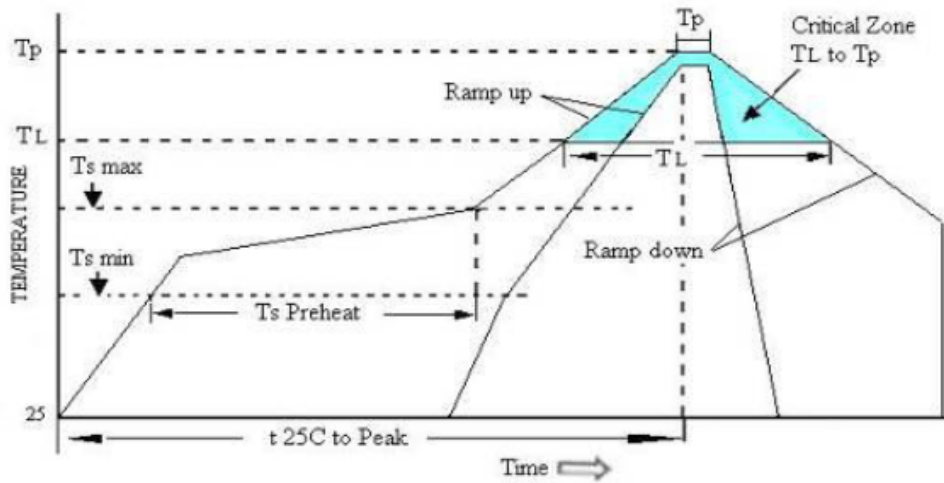
## 2、Mechanical Structure(mm)



**Note1:** Tolerance ±0.2 mm



### 3、 Reflow Soldering Curve (RoHS)



High Temperature Infrared /Convection

Note: Temperature shown are applied to body of device

Ts max to $T_L$ (Ramp-up Rate)	3°C/second max
Preheat	
Temperature Min( $T_s$ Min)	150°C
Temperature Typical( $T_s$ Typ)	175°C
Temperature Max.( $T_s$ Max)	200°C
Time( $t_s$ )	60-180 seconds
Ram-up Rate( $T_L$ to $T_p$ )	3°C/second Max
Time Maintained Above:	
--Temperature( $T_L$ )	217°C
--Time( $T_L$ )	60-150seconds
Peak Temperature ( $T_p$ )	260°C Max for 10 seconds
Time within 5°C of actual peak( $t_p$ )	20-40 seconds
Ramp-down Rate	6°C/seconds Max
Tune 25°C to Peak Temperature( $t$ )	8 minutes Max
Moisture Sensitivity Level	Level 1

### 4、 Package: Tape & Reel (mm)

