

Customer Code: \_\_\_\_\_

# DATASHEET

DAPU P/N: DP7C16000004

| DAPU             |         |          | Customer Approval      |
|------------------|---------|----------|------------------------|
| Drew             | Audited | Approved | Stamp, please! Thanks! |
|                  |         |          |                        |
| Date: 2021.02.18 |         |          |                        |

## Guangdong Dapu Telecom Technology Co.,Ltd

Building 5, No.24, Industrial East Road, Songshanhu Park, Dongguan, Guangdong, P.R. China

TEL: 0086-0769-88010888 FAX: 0086-0769-81800098

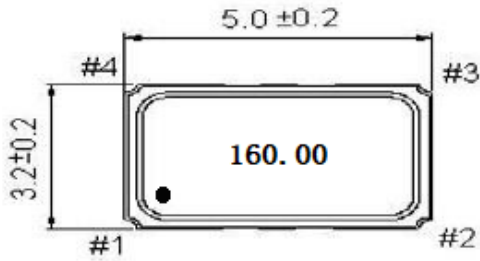
**1、 Electrical Parameters**

| MODEL: DP7C1600004 |  |       |                    |      |                     |                  |                               |
|--------------------|--|-------|--------------------|------|---------------------|------------------|-------------------------------|
| No                 | Parameters                               | SYM.  | Electrical Spec.   |      |                     |                  | Notes                         |
|                    |  |       | Min.               | Typ. | Max.                | Units            |                               |
| 1                  | Nominal Frequency                        | FL    | 160.00             |      |                     | MHz              |                               |
| 2                  | Output Load Capacitance                  | CL    | CMOS               |      |                     | -                |                               |
| 3                  | Frequency Stability                      | -     | -20                |      | +20                 | $\times 10^{-6}$ | @25°C                         |
|                    |  | -     | -20                |      | +20                 | $\times 10^{-6}$ | -40°C~85°C                    |
| 4                  | Operating Temperature                    | Topr  | -40                |      | +85                 | °C               |                               |
| 5                  | Storage Temperature                      | Tstg  | -55                | ~    | +125                | °C               |                               |
| 6                  | Supply Voltage                           |       | 3.15               | 3.3  | 3.45                | V                |                               |
| 7                  | Current                                  |       |                    |      | 20                  | mA               | At maximum supply voltage     |
| 8                  | Output load                              | -     | 15                 |      |                     | pF               |                               |
| 9                  | Tri-State Output Active                  |       | 0.7V <sub>DD</sub> |      |                     | V                | Pin1 Tri-state                |
| 10                 | Tri-State Output in High-Impedance state |       |                    |      | 0.3 V <sub>DD</sub> | V                |                               |
| 11                 | Output Voltage High                      | VoH   | 0.9V <sub>DD</sub> | -    |                     | V                |                               |
| 12                 | Output Voltage Low                       | VoL   |                    | -    | 0.1 V <sub>DD</sub> | V                |                               |
| 13                 | Symmetry                                 | TH/T  | 45                 | 50   | 55                  | %                |                               |
| 14                 | Start Time                               |       |                    |      | 5                   | mS               |                               |
| 15                 | Rise and Fall time                       | Tr/Tf |                    |      | 5                   | nS               |                               |
| 16                 | Aging                                    |       | -3                 |      | +3                  | $\times 10^{-6}$ | Frequency drift in first year |

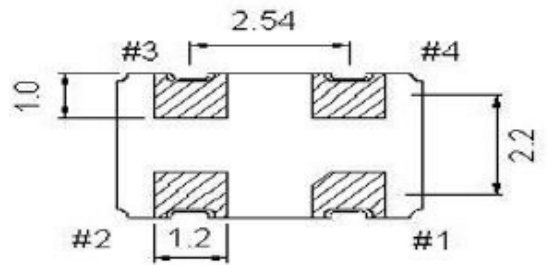


## 2、Mechanical Structure(mm)

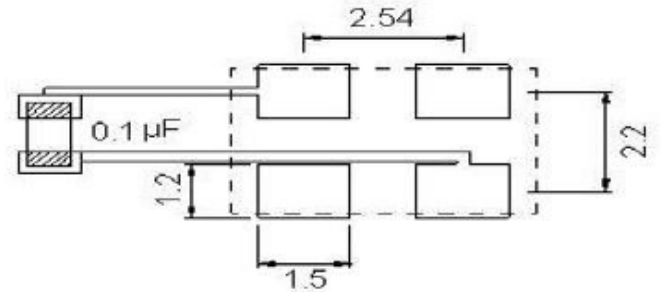
[ TOP VIEW ]



[ BOTTOM VIEW ]



[ SIDE VIEW ]



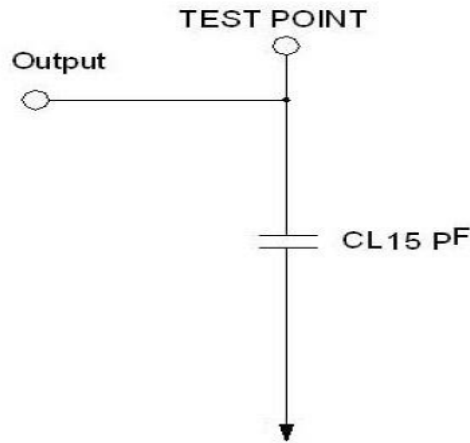
Recommended soldering pattern

| Pin | Function        |
|-----|-----------------|
| #1  | TRI-STATE       |
| #2  | GND             |
| #3  | Output          |
| #4  | V <sub>DD</sub> |

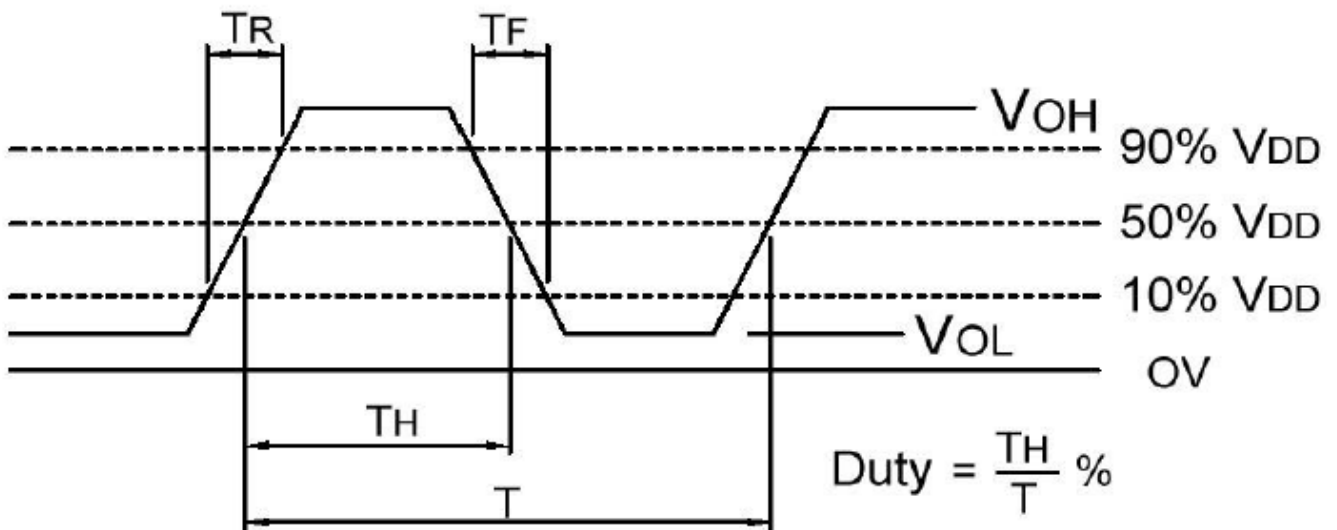
Note1: Tolerance ±0.20mm



### 3、 Test Circuit

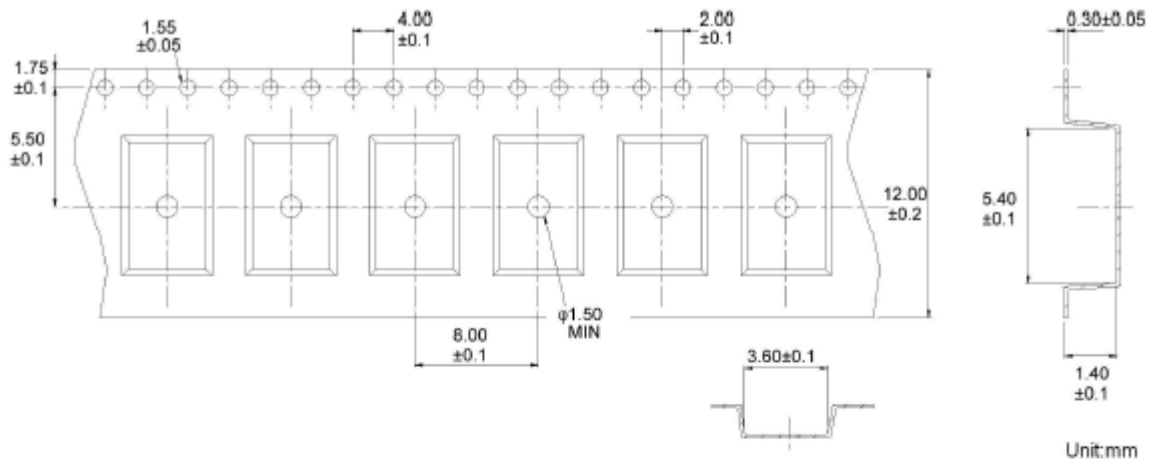


### 4、 Output Waveform(CMOS Load)

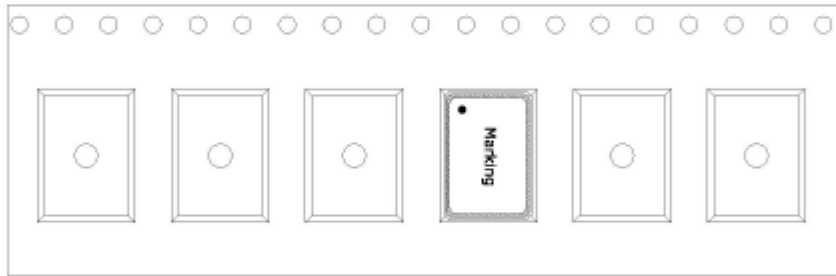




### 5、 Package: Tape & Reel



#### ➤ THE DIRECTION OF PACKING



#### ➤ REEL DIMENSIONS

