

Customer Code : _____

DATASHEET

DAPU P/N : **V936-A311-125.00MHz**

Customer P/N: _____

DAPU			Customer Approval
Drew	Audited	Approved	Stamp, please! Thanks!
Date: 2021.11.11			

Guangdong Dapu Telecom Technology Co.,Ltd

Building 5, No.24, Industrial East Road, Songshanhu Park, Dongguan, Guangdong, P.R. China

TEL: 0086-0769-88010888 FAX: 0086-0769-81800098



Table of amendment

Version	Revision contents	Prepared by	Revised date
1.0	The first issued	<i>Amway</i>	2021.11.11



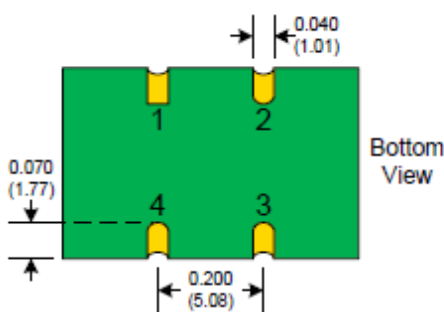
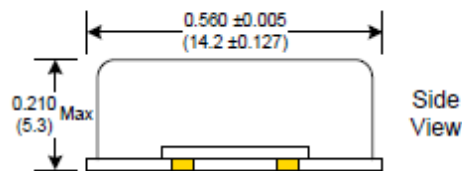
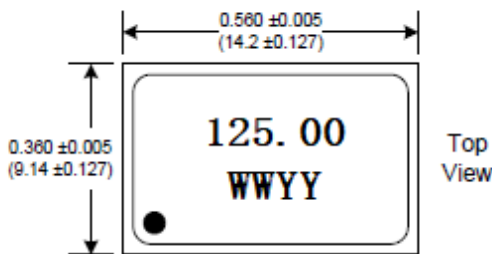
1、 Electrical Parameters

Parameters	SYM	Electrical Spec.				Notes
		Min.	Typ.	Max.	Units	
Frequency Stabilities						
Nominal Frequency	F _N	125.00			MHz	
APR		±20			× 10 ⁻⁶	Cover frequency tolerance@25°C and frequency stability vs. operating temperature range and aging.
Frequency Tolerance vs. Operating Temperature Range		-30		+30	ppm	T _A varied from -40°C to 85°C, measurement referenced to frequency observed with T _A = 25°C, V _{cc} =3.3V, V _C =1.65V, O _{load} =15pF, temperature rise speed less than 2°C per minute.
Initial Frequency Tolerance		-10		+10	ppm	Measurement referenced to frequency observed with T _A = 25°C, V _{cc} =3.3V, V _C =1.65V, within 30 days after ex-works.
RF Output						
Output Waveform		CMOS				
Load	I _{OUT}	15			pF	
High Levels	V _{OH}	90%			V _{dd}	
Low Levels	V _{OL}			10%	V _{dd}	
Rise / Fall Time	T _r / T _f			5	ns	20%-80% V _{dd}
Symmetry	SYM	45		55	%	50% V _{dd}
Aging@1 year		-3		+3	× 10 ⁻⁶	Covered by APR
Ageing there after		-1		+1	× 10 ⁻⁶	
Supply Voltage						
Supply Voltage	V _{CC}	3.0	3.3	3.6	V	
Supply Current	I _{CC}		25		mA	
Control Voltage						
Control Voltage		0	1.65	3.3	V	
Tuning sensitivity			25		× 10 ⁻⁶ /v	
Absolute Pull Range (APR)		±20			× 10 ⁻⁶	
Linearity				10	%	
Modulation Bandwidth		10			KHz	@-3dB
Input Impedance		51			Kohm	
Slope		Positive				

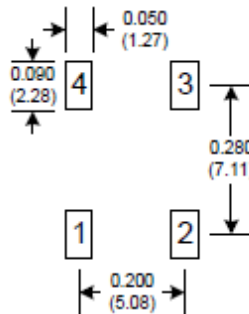


Phase Noise						
Jitter RMS			40		fs	(12KHz-20MHz)
Phase Noise			-77	-72	dBc/Hz	10Hz
			-108	-103		100Hz
			-136	-131		1KHz
			-162	-157		10KHz
			-170	-168		100KHz
			-170	-168		1MHz
Environmental Conditions						
Operating Temperature	T _{OP}	-40	~	85	°C	
Storage Temperature	T _{ST}	-55	~	125	°C	
ESD Level	Human Body Model, class2: 2000V to 4000V; ANSI/ESDA/JEDEC JS-001-2010.					
	Machine Model, class B: 200V to 400V; JEDEC JESD22-A115C.					
Moisture Sensitivity Level	Level 2.					
Vibration	Test Condition: 0.75mm ;acceleration:10g;10Hz~2000Hz, one cycle per 30 min, test 2 hour. (3 times for each 3 directions X ,Y , Z), IEC 68-2-06 Test Fc.					
Shock	100g; 6ms; half sine wave (3 times for each 3 directions X ,Y , Z),IEC 68-2-27 Test Ea/Severity 50A.					

2、 Mechanical Structure(mm)



SUGGESTED PAD LAYOUT



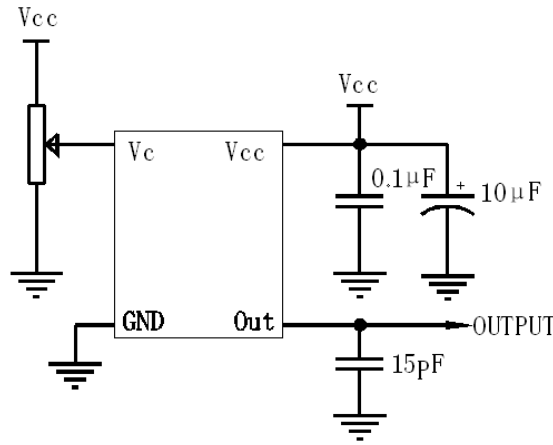
Pad	Connection
1	Volt Control
2	GND
3	OUT
4	Vdd

PAD FINISH: Immersion Gold (ENIG); 5 micro inches maximum

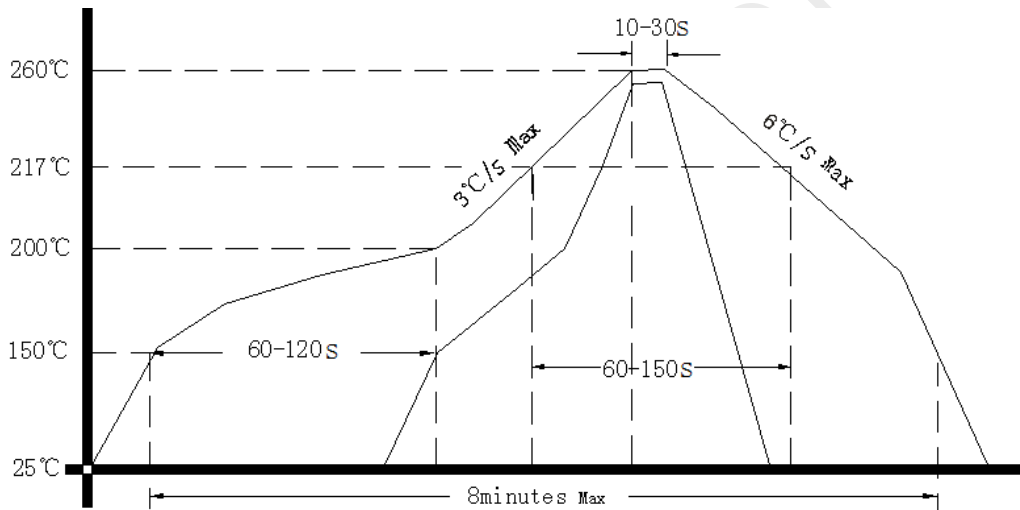
Note1: The WW representative: week
After YY representative: year



3、 Test circuit



4、 Reflow Soldering Curve (RoHS)



5、 Package: Tape & Reel (mm)

