

Customer Code : _____

DATASHEET

DAPU P/N: **T21-S569-24.00MHz**

Customer P/N: _____

DAPU			Customer Approval
Drew	Audited	Approved	Stamp, please! Thanks!
Date: 2021.11.10			

Guangdong Dapu Telecom Technology Co.,Ltd

Building 5, No.24, Industrial East Road, Songshanhu Park, Dongguan, Guangdong, P.R. China

TEL: 0086-0769-88010888 FAX: 0086-0769-81800098



Table of amendment

Version	Revision contents	Prepared by	Revised date
1.0	The first issued	<i>Amway</i>	2021.06.28
1.1	The “Mechanical Structure” changed	<i>Amway</i>	2021.07.19
1.2	The “Supply Voltage” changed	<i>Amway</i>	2021.08.24
1.3	The “Marking” changed	<i>Amway</i>	2021.11.10



1. Electrical Parameters

MODEL: T21-S569-24.00MHz						
Item	Description	Parameters			Unit	Test Condition
		Min.	Typ.	Max.		
Output	Frequency	24.00			MHz	
	Output Waveform	Clipped Sine Wave				
	Vp-p	0.8			V	
	Symmetry	40		60	%	GND level (DC cut)
	Start Up Time			2	ms	@90% of final V _{OUT} level
	Load	9	10	11	kΩ/pF	
Frequency Stabilities	Frequency Tolerance vs. Operating Temperature Range	-0.5		+0.5	$\times 10^{-6}$	T _A varied from -30°C to 85°C, measurement referenced to frequency observed with T _A =25±/-2°C, V _{cc} =3.0V, O _{load} =10KΩ//10pF, temperature variable speed less than 2°C per minute.
	Nominal Frequency Tolerance	-1.5		+1.5	$\times 10^{-6}$	Ref. to nominal frequency, Please leave after reflow in 2h or more at room ambient.
	Frequency Tolerance vs. Supply Voltage	-0.1		+0.1	$\times 10^{-6}$	measurement referenced to frequency observed T _A =25°C, V _{cc} ±5%, and O _{Load} =10KΩ//10pF.
	Frequency Tolerance vs. Load	-0.1		+0.1	$\times 10^{-6}$	10% load change measurement referenced to frequency observed with T _A =25°C, V _{cc} =3.0V, and O _{Load} =10KΩ//10pF.
	G Sensitivity			2	$\times 10^{-9}/G$	30Hz to 1500Hz random vibration in each of 3-axis.
	Aging Tolerance 1 Year	-1		+1	$\times 10^{-6}$	T _A =25°C, V _{cc} =3.0V, and after 1h of operation.
	Aging Tolerance 10 Year	-5		+5	$\times 10^{-6}$	
Phase Noise	Phase Noise @25°C			-130	dBc/Hz	1kHz
Power Supply	Operating Current			1.5	mA	@25°C, V _{cc} =3.0V, O _{Load} =10KΩ//10pF.
	Supply Voltage	1.8		3.3	V	

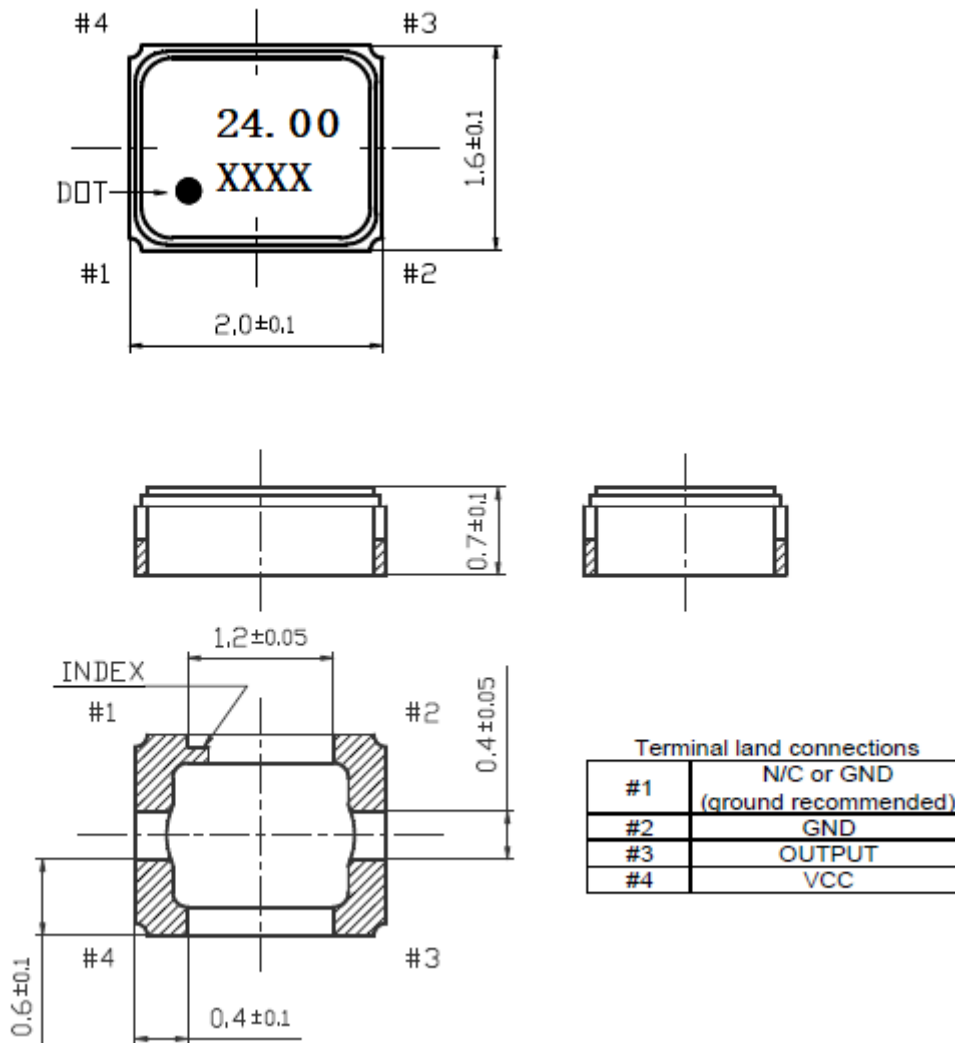


Environmental Conditions	Operable Temperature	-30		+85	°C	
	Storage Temperature	-40		+85	°C	
	ESD Level	Human Body Model,class2: 2000V to 4000V; ANSI/ESDA/JEDEC JS-001-2010.				
		Machine Model, class B: 200V to 400V; JEDEC JESD22-A115C.				
	Moisture Sensitivity Level	Level 2.				
	Vibration	Test Condition: 0.75mm ;acceleration:10g;10Hz~2000Hz, one cycle per 30 min, test 2 hour. (3 times for each 3 directions X , Y , Z) .IEC 68-2-06 Test Fc.				
Shock	100g; 6ms; half sine wave (3 times for each 3 directions X , Y, Z),IEC 68-2-27 Test Ea/Severity 50A.					
Full Package Storage	Relative humidity (%)	20% ~70%				
	Temperature (°C)	-10~35°C				

DAPU Confidential



2. Mechanical Structure(mm)

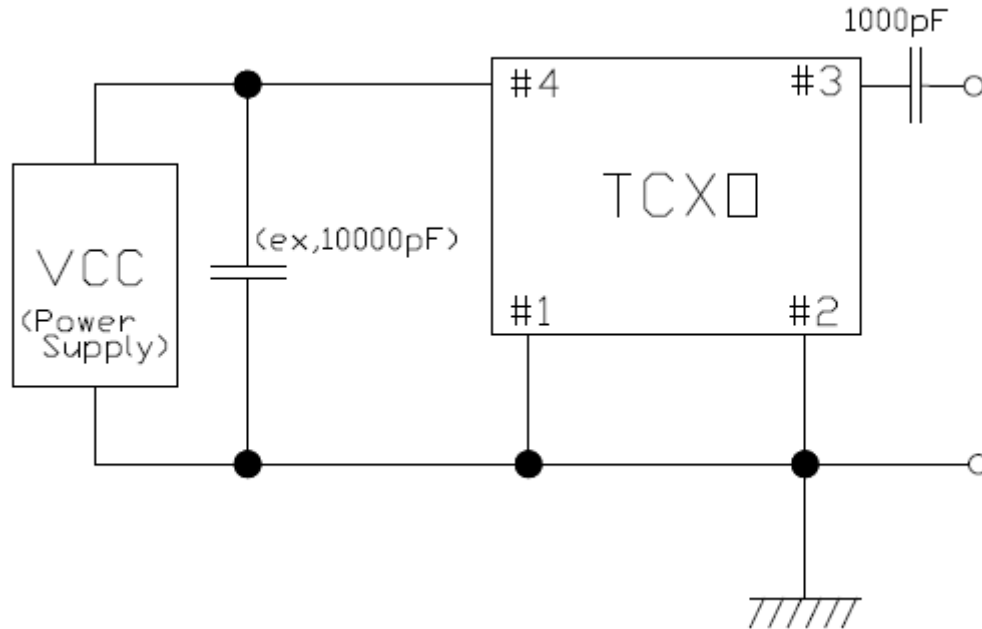


Note1: Tolerance ± 0.20mm without mark

Note2: The first two xx representative: year
After two xx representative: week



3. Test Circuit



4. Package: Tape & Reel (mm)

