

Customer Code : _____

DATASHEET

DAPU P/N: **DPDE12500001**

Plot			The Label
Drew	Audited	Approved	Stamp, please! Thanks!
Date: 2020.03.26			

Guangdong Dapu Telecom Technology Co.,Ltd

Bldg16,.N.Ind.Zone,SSL Industry Park, Dongguan City, Guangdong Province, China

TEL: 0086-0769-88010888 FAX: 0086-0769-81800098

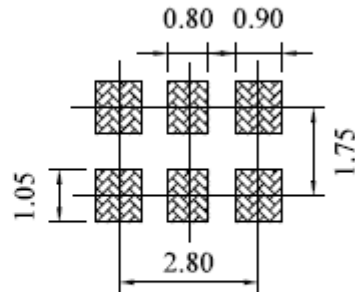
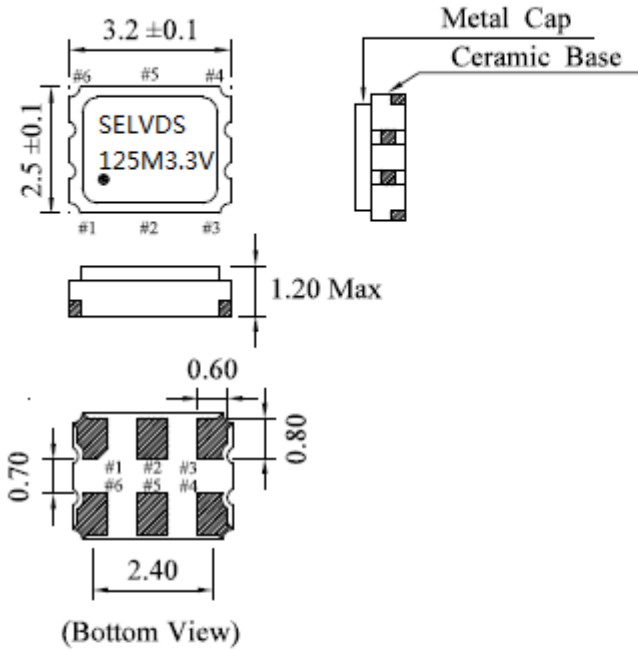


1、Electrical Parameters

MODEL: DPDE12500001							
No.	Parameters	SYM.	Electrical Spec.				Notes
			Min.	Typ.	Max.	Units	
1	Nominal Frequency	F0	125.00			MHz	
2	Output Waveform		LVDS				
3	Output Load		100			Ω	
4	Supply Voltage	VDD	2.97	3.3	3.63	V	
5	Frequency Stability	F-stab	-50		+50	$\times 10^{-6}$	
6	Operating Temperature	T-opr	-40	~	+85	$^{\circ}\text{C}$	
7	Storage Temperature	T-stg	-55	~	+125	$^{\circ}\text{C}$	
8	Current Consumption	IDD	-		70	mA	
9	First Year Aging		-3		+3	$\times 10^{-6}$	
10	Symmetry		45		55	%	
11	Voltage High	VOH			1.6	V	
12	Voltage Low	VOL	0.9			V	
13	Rise and Fall Time		-		1	ns	20%-80% output swing level
14	Shock	Free Drop from 50cm height on a hard wood board for 3time					
	Vibration	10~55Hz 1.5mmP-P 1~2min./CICLE,X.Y.Z.2H for each plane.					
	Aging	85 $^{\circ}\text{C}$ $\pm 3^{\circ}\text{C}$,720H(NO BIAS)					
	High Humidity	40 $^{\circ}\text{C}$ $\pm 2^{\circ}\text{C}$,90~95%,96H(NO BIAS).					
	Thermal Cycle	-40 $^{\circ}\text{C}$ ~85 $^{\circ}\text{C}$,30min,10Cycle.					
	Solderability	Mil-STD-202 Method 208.					



2、 Mechanical Structure(mm)



INH Function	
#1	#4 , #5(Output)
Open	Active
"H"Level	Active
"L"Level	High Z(Oscillation Stopped)

Enable / Disable Function

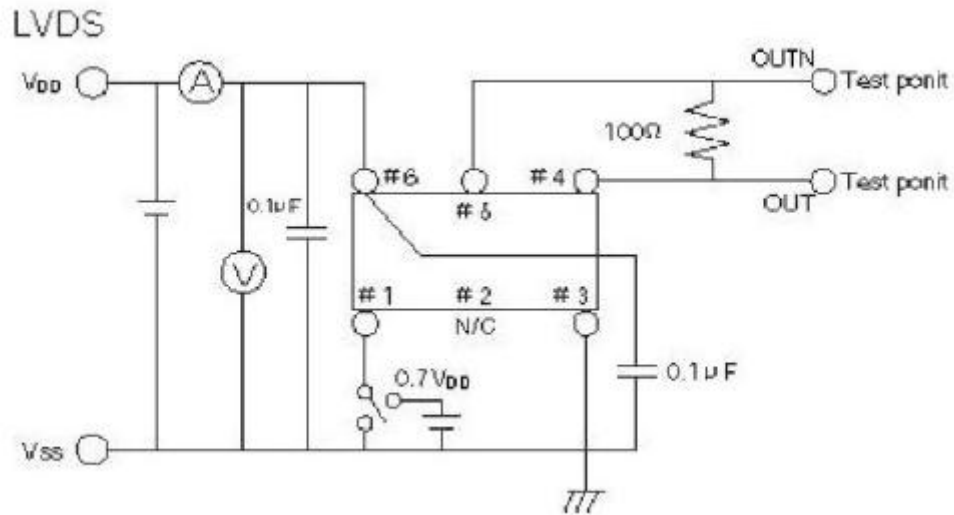
Input #1 H OR OPEN 0.7V _{cc} MIN	Output #4,#5 RF-SIGNAL
L 0.3V _{cc} MAX	Hight Z

Pin Connections

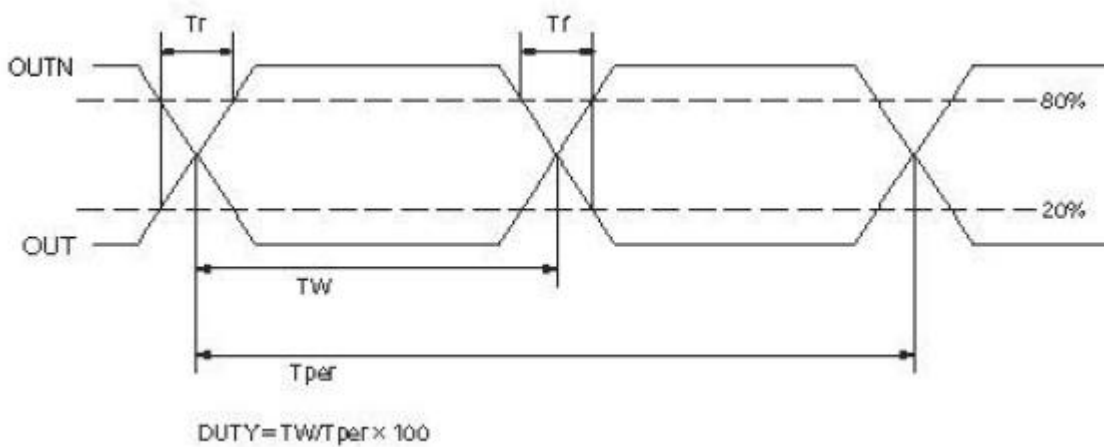
- # 1 : INH
- # 2 : Nc
- # 3 : Gnd
- # 4 : Output
- # 5 : Complementary Output
- # 6 : V_{dd}



3、 Test Circuit

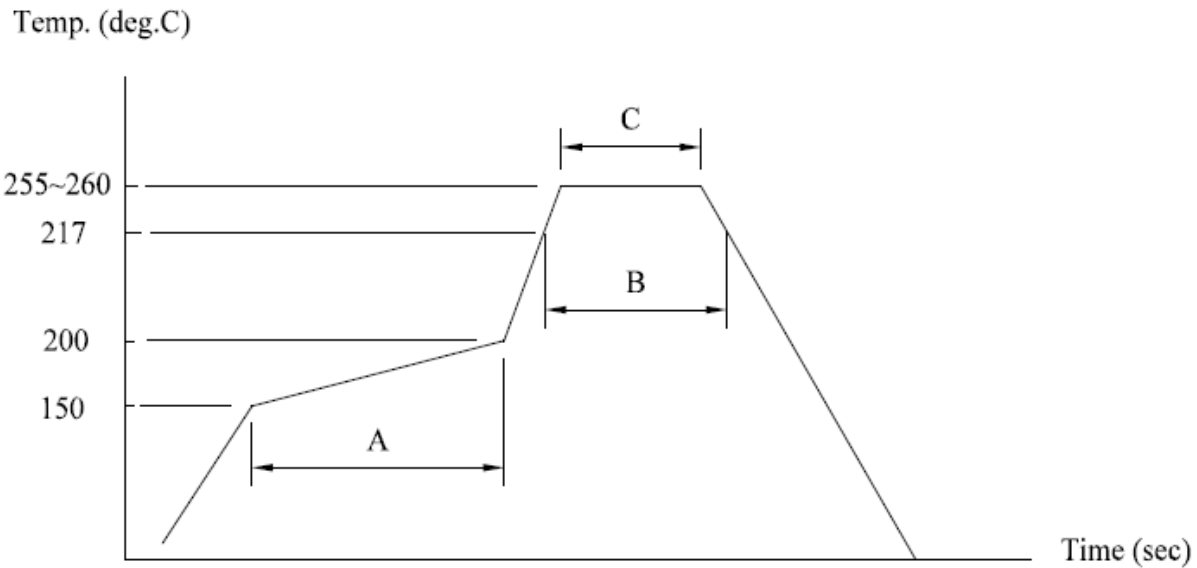


4、 Output Waveform





5、Soldering Reflow



(A)→Preheating area : 150~200°C, 60~120sec.

(B)→Heating area : 217°C, 60~150sec.

(C)→Peak temperature : 255~260°C, 30sec. Max.

Ramp-up rate (217→260°C) : 3°C/sec. Max.

Ramp-down rate (260→217°C) : 6°C/sec. Max.

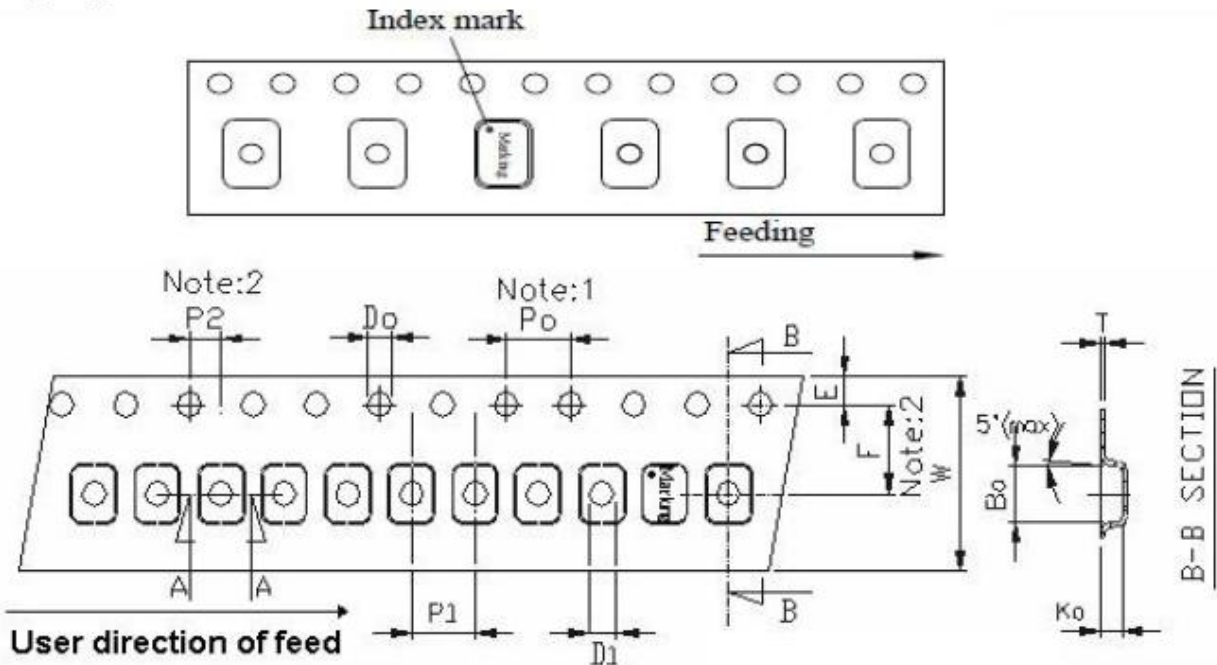
Time 25°C→260°C : 480sec. Max.

*Referance JEDEC J-STD-020



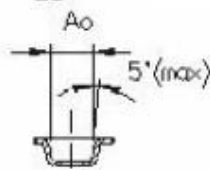
6、 Package: Tape & Reel (mm)

Taping



Unit: mm

Symbol	Spec.
K1	-
Po	4.0±0.10
P1	4.0±0.10
P2	2.0±0.10
Do	1.50 ^{+0.1} / ₊₀
D1	1.0 (MIN)
E	1.75±0.10
F	3.50±0.10
10Po	40.0±0.10
W	8.0±0.20
T	0.25±0.05



A-A SECTION

$$A_o = \underline{2.70 \pm 0.10} \text{ mm}$$

$$B_o = \underline{3.40 \pm 0.10} \text{ mm}$$

$$K_o = \underline{1.40 \pm 0.10} \text{ mm}$$

Notice:

1. 10 Sprocket hole pitch cumulative tolerance is ±0.1mm
2. Pocket position relative to sprocket hole measured as true position of pocket not pocket hole.
3. Ao & Bo measured on a plane 0.3mm above the bottom of the pocket to top surface of the carrier.
4. Ko measured from a plane on the inside bottom of the pocket to the top surface of the carrier.
5. Carrier camber shall be not than 1mm per 100mm through a length of 250mm.