

Customer Code : \_\_\_\_\_

# DATASHEET

DAPU P/N:     FYT00015C    

Customer P/N: \_\_\_\_\_

DAPU			Customer Approval
Drew	Audited	Approved	Stamp, please! Thanks!
Date: 2019.08.26			

## Guangdong Dapu Telecom Technology Co.,Ltd

Bldg13-16,.N.Ind.Zone,SSL Industry Park, Dongguan City, Guangdong Province, China

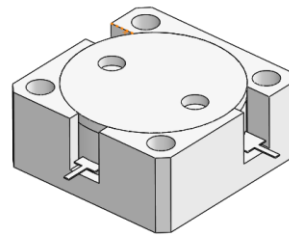
TEL: 0086-0769-88010888 FAX: 0086-0769-81800098



## FYT00015C

### 2400MHz to 2500MHz Single-Junction Drop-In Circulator

Revision 1

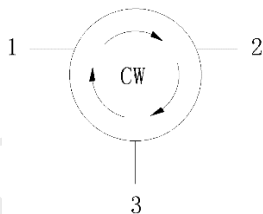


#### Applications:

- Wireless Infrastructure
- LTE

#### Features:

- Operating frequency range: 2400MHz to 2500MHz
- Operating temperature range: -40°C to +85°C
- BeOfree&RoHS compliant



Block Diagram



Electrical Specifications:

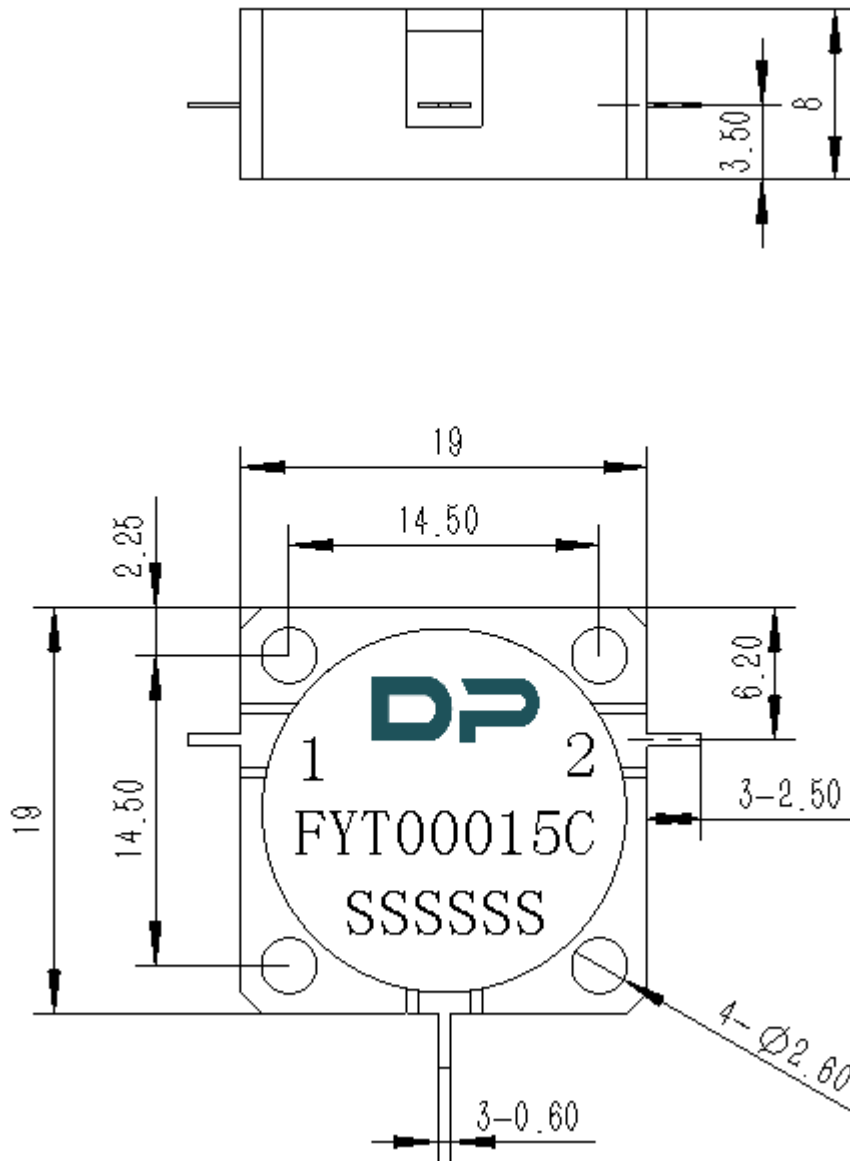
Product Name	FYT00015C	
Frequency	2400~2500	MHz
Direction	CW	
Insertion Loss (Max.)	0.18	dB
Isolation (Min.)	22	dB
Return Loss (Min.)	22	dB
Third Order Intermodulation <sup>2</sup>	-75@2 x 35W CW tones, 5MHz spacing,2560MHz—2630MHz -70@2 x 35W CW tones, 5MHz	dBc
Input Power	500	W
Reverse Power	500	W
Operating Temperature	-40~+85	°C
Storage Temperature	-55~+125	°C
Impedance	Typ: 50	Ω

Notes :

1. Exposure to maximum rating conditions for extended periods may reduce device reliability. There is no damage to device with only one parameter set at the limit and all other parameters set at or below their nominal value. Exceeding any of the limits listed here may result in permanent damage to the device.
2. Performance is guaranteed under the conditions listed in this table and over the operating temperature range.
3. Performance will not degrade by > 10% (Insertion loss > 20%) with an operating temperature of up to 130 °C.



Mechanical Specifications:



Notes:

1. The housing and circuit are silver-plated.
2. Tolerance is  $\pm 0.2$ mm unless otherwise specified.
3. Coplanarity Specification: 0.1mm maximum.
4. Part Number, Lot Code, and Port Designation are printed on the top side of device.
5. Serial Number format shall be SSSSSS