

Travelling Merchant: _____

DATASHEET

Standard: T11A-BWAFCNN-5.00MHz

Plot			The Label
Drew	Audited	Approved	Stamp, please! Thanks!
Date:			

Guangdong Dapu Telecom Technology Co.,Ltd

Bldg13,.N.Ind.Zone,SSL Industry Park, Dongguan City, Guangdong Province, China

TEL: 0086-0769-88010888 FAX: 0086-0769-81800098



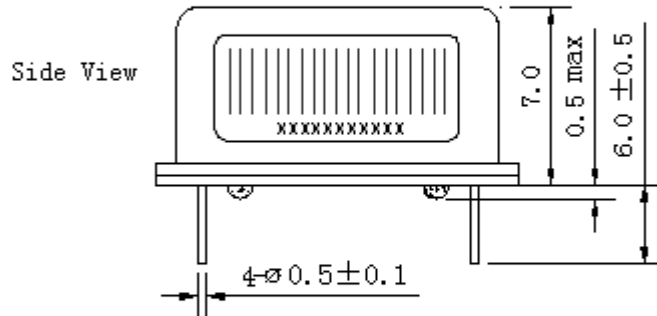
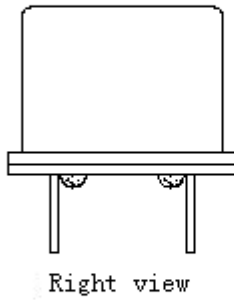
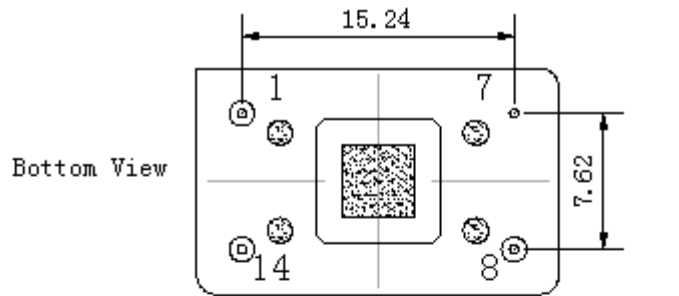
1、Electrical Parameters

MODEL: T11A-BWAFCNN-5.00MHz						
Item	Description	Parameters			Unit	Test Condition
		Min.	Typ.	Max.		
Output	Frequency	5.00			MHz	
	Output Waveform	HCMOS				
	Output Low Voltage			+0.4	V	$V_{cc}=5.0V, O_{load}=15pF$
	Output High Voltage	+3.2			V	$V_{cc}=5.0V, O_{load}=15pF$
	Duty Cycle	45	50	55	%	@50%
	Rise / Fall Time (10% ~ 90%)		7	8	ns	@25°C
	Load	15			pF	
Frequency Stabilities	Frequency Tolerance vs. Operating Temperature Range	-1		+1	ppm	T_A varied from -20°C to 60°C, measurement referenced to frequency observed with $T_A = 25^\circ C, V_{cc}=5.0V, O_{load}=15pF$.
	Initial Frequency Tolerance	-1		+1	ppm	Measurement referenced to frequency observed with $T_A = 25^\circ C, V_{cc}=5.0V$, and after 5s of operation, within 30 days after ex-works.
	Frequency Tolerance vs. Load	-0.2		+0.2	ppm	5% load change measurement referenced to frequency observed with $T_A=25^\circ C, V_{cc}=5.0V$.
	Frequency Tolerance vs. Supply Voltage	-0.2		+0.2	ppm	measurement referenced to frequency observed $T_A=25^\circ C, V_{cc}$ varied from 4.75V to 5.25V, and $O_{Load}=15pF$.
	Aging Tolerance Per Day	-0.02		+0.02	ppm	$T_A=25^\circ C, V_{cc}=5.0V$, and after 1h of operation.
	Aging Tolerance 1 Year	-1		+1	ppm	
Power Supply	Current Consumption		5		mA	@25°C, $V_{cc}=5.0V, O_{load}=15pF$
	Supply Voltage	4.75	5.0	5.25	V	
Phase Noise	Phase Noise		-130		dBc/Hz	1KHz
Environmental Conditions	Operable Temperature	-20		+60	°C	
	Storage Temperature	-40		+85	°C	
	Vibration	Test Condition: 0.75mm ;acceleration:10g;10Hz~2000Hz, one cycle per 30 min, test 2 hour. (3 times for each 3 directions X , Y , Z).				



	Shock	100g; 6ms; half sine wave (3 times for each 3 directions X ,Y, Z),IEC 68-2-27 Test Ea/Severity 50A.
	Drop	Test Condition: free drop on steel-made surface or rigid, plane from a height of 100cm, IEC 68-2-32.

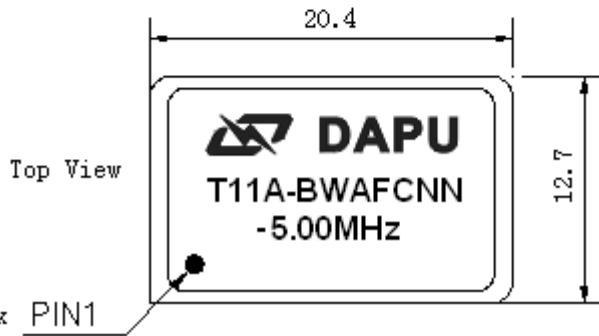
2、 Mechanical Structure(mm)



PIN FUNCTION

PIN	PUNCTION
1	NC
7	GND
8	OUTPUT
14	VCC

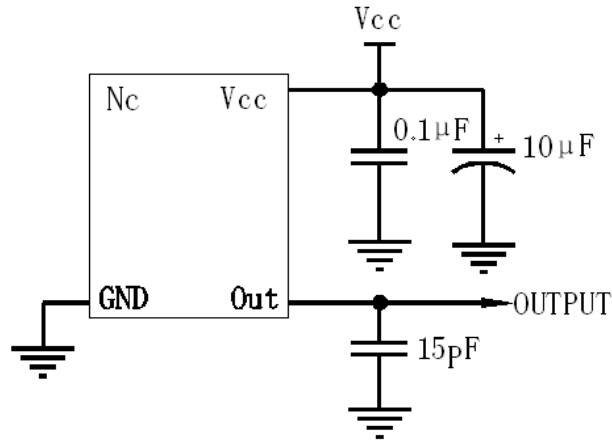
* Tolerance $\pm 0.2\text{mm}$ without mark PIN1



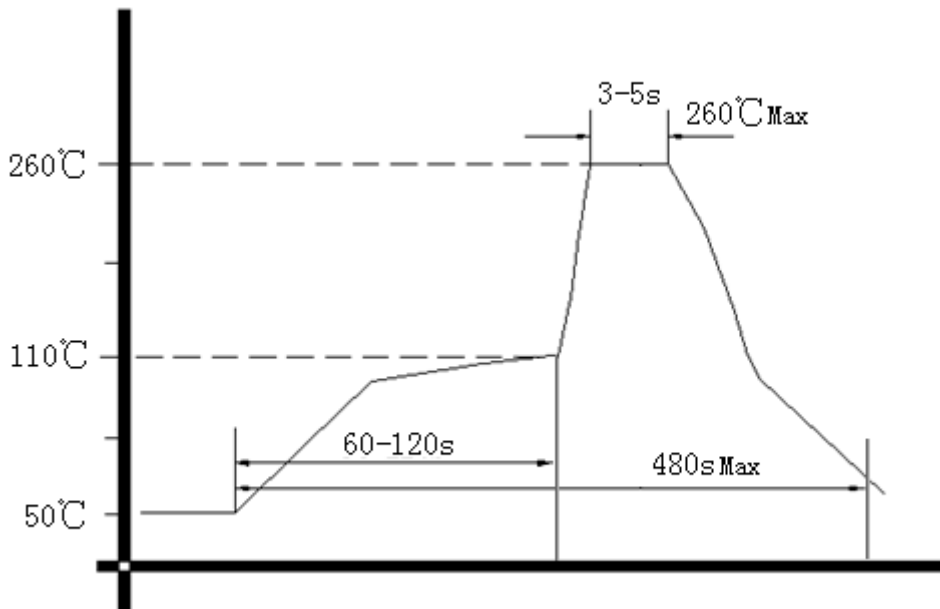
Note: Referential Weight 4.1g



3、 Test Circuit



4、 Wave Soldering Curve (RoHS)



5、 Package: PVC Tube,10pcs (mm)

