



SPECIFICATION

Customer : _____

Customer P/N : **OS70506A-AEAN-156.25MHz**

Agent : _____

Agent Code : _____

Order Code : _____

P/N : _____

Customer Approval :

东莞市大普通信技术有限公司

Dongguan DAPU Telecom Technology co.,Ltd

市场/SALE DEPARTMENT

TEL: 0769-81800088

FAX: 0769-81800098

URL [HTTP://www.dptel.com](http://www.dptel.com)

Date : _____

Approved By: _____

品保部/QUALITY ASSURANCE DEPT

TEL:0769-81800088-833

Checked By: _____

研发部/R&D DEPT.

TEL:0769-81800088-828

Designer : _____



1、 Scope:

- | | | |
|-----|-------------------------|--------------------------|
| 1.1 | Description: | SMD Crystal Oscillator |
| 1.2 | Center Frequency: | 156.25MHz |
| 1.3 | Dimension & Drawing No: | OS70506A-AEAN -156.25MHz |

2、 Construction:

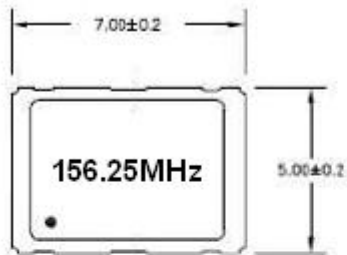
- 2.1 Oscillators series: SMD7×5 XO

3、 Electrical Characteristics

- | | | | |
|------|------------------------------|-------------------------------|----------------------------------|
| 3.1 | Nominal Frequency: | 156.25MHz | |
| 3.2 | Frequency Stability: | $\leq \pm 20\text{ppm}$ | @ -20°C to +70°C |
| 3.3 | Operating Temperature Range: | -20°C to +70°C | |
| 3.4 | Storage Temperature Range: | -40°C to +85°C | |
| 3.5 | Input Voltage: | +3.3VDC $\pm 5\%$ | |
| 3.6 | Current Consumption: | $\leq 60\text{mA}$ | |
| 3.7 | Output Waveform: | LVPECL | |
| 3.8 | Output Symmetry: | 45% ~ 55% | @ measured 50% of waveform |
| 3.9 | Rise/Fall Time: | $\leq 850\text{ps}$ | @ measured 20% ~ 80% of waveform |
| 3.10 | Output Voltage V_{OL} : | $\leq V_{CC} - 1.620\text{V}$ | |
| | V_{OH} : | $\geq V_{CC} - 1.025\text{V}$ | |
| 3.11 | Output Load: | 50Ω to $V_{CC} - 2\text{V}$ | @ output requires termination |
| 3.12 | Enable/ Disable | $\geq 0.7V_{CC}$ | @ Enable |
| | | $\leq 0.3V_{CC}$ | @ Disable |
| 3.13 | Output Disable delay | $\leq 200\text{ns}$ | |
| | Output Enable delay | $\leq 10\text{ns}$ | |
| 3.14 | Jitter, phase | $\leq 1\text{ps(RMS)}$ | @ 12 kHz ~ 40 MHz frequency band |
| | Jitter, accumulated | $\leq 7\text{ps(RMS)}$ | @ 20000 adjacent periods |
| | Jitter, total | $\leq 40\text{ps(pk-pk)}$ | @ 1000 random periods |

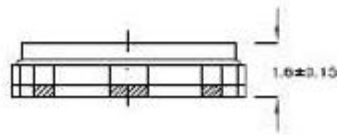


4. Figure



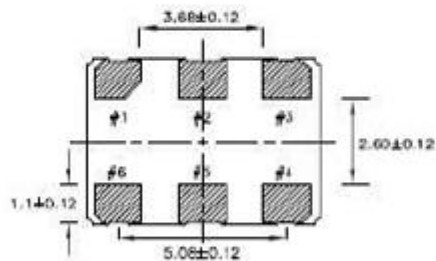
Standard

| Terminal | Connection |
|----------|------------|
| #1 | NC or INH |
| #2 | NC |
| #3 | GND |
| #4 | OUT |
| #5 | OUTN |
| #6 | +Vcc |

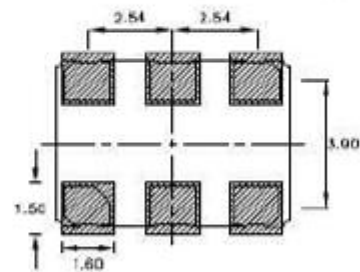


Option

| Terminal | Connection |
|----------|------------|
| #1 | NC |
| #2 | NC or INH |
| #3 | GND |
| #4 | OUT |
| #5 | OUTN |
| #6 | +Vcc |



LAND PATTERN (REFERENCE)



Unit : mm