

Travelling Merchant: S018

DATASHEET

Standard: O22B-G319-12.80MHz

Plot			The Label
Drew	Audited	Approved	 2010.12.08 Stamp, please! Thanks!
Date:			

Guangdong Dapu Telecom Technology Co.,Ltd

Bldg13,.N.Ind.Zone,SSL Industry Park, Dongguan City, Guangdong Province, China

TEL: 0086-0769-88010888 FAX: 0086-0769-81800098



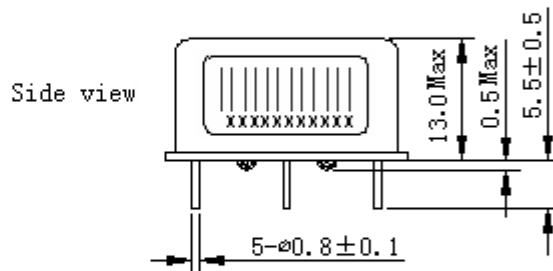
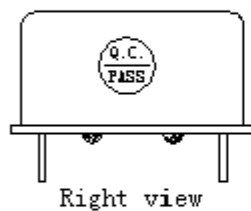
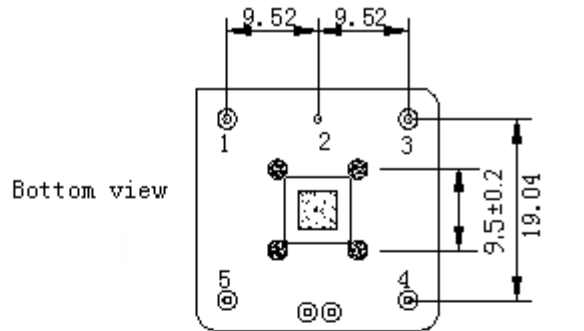
1. Electrical Parameters

MODEL: O22B-G319-12.80MHz						
Item	Description	Parameters			Unit	Test Condition
		Min.	Typ.	Max.		
Output	Frequency	12.80			MHz	
	Output Waveform	HCMOS				
	Duty Cycle	40	50	60	%	@50%
	Output low voltage			+0.4	V	V _{cc} =3.3V, O _{load} =15pF
	Output high voltage	+2.4			V	V _{cc} =3.3V, O _{load} =15pF
	Rise / Fall time (10%~90%)			5	ns	
	Load	15			pF	
	Spurious			-80	dBc	
Frequency Stabilities	Frequency Tolerance vs. Operating Temperature Range	-0.01		+0.01	ppm	T _A varied from 0°C to 70°C, V _{cc} =3.3V, and O _{Load} =15pF, Measurement referenced to frequency observed With T _A =25°C, V _{cc} =3.3V
	Initial Frequency Tolerance	-1		+1	ppm	Measurement referenced to frequency observed with T _A =25°C, V _{cc} =3.3V, and after 15 minutes of operation, within 30 days after ex-works
	Frequency Tolerance vs. supply voltage	-5		+5	ppb	T _A =25°C, V _{cc} varied from 3.47V to 3.14V, O _{Load} =15pF, Measurement after working 4 hours and voltage changed 5 minutes later, with T _A =25°C, V _{cc} =3.3V
	Frequency Tolerance vs. Load	-5		+5	ppb	10% Load Change Measurement referenced to frequency observed with T _A =25°C, V _{cc} =3.3V
	Short Term Stability			0.01	ppb	@ Temperature stability, no EMI\EMC or other interference, test after 1hour ref. to 25°C, 1s
	Aging Tolerance per day	-1		+1	ppb	V _{cc} , T _A constant Measurement referenced to frequency observed with T _A = 25°C, V _{cc} =3.3V, and after 30 days of operation
	Aging Tolerance 1 Year	-0.15		+0.15	ppm	
	Aging Tolerance 20 Years	-2		+2	ppm	
Power Supply	Steady Consumption			400	mA	After warm up time@25°C
	Warm-Up Time			5	minute	@25°C within ±1.0x10 ⁻⁷ of final frequency with reference after 1 hours on
	Warm up current			1100	mA	
	Supply Voltage	3.14	3.3	3.47	V	



Phase Noise	Phase Noise		-82		dBc/Hz	1Hz
			-112			10Hz
			-135			100Hz
			-145			1KHz
			-150			10KHz
Environmental Conditions	Operable Temperature	0		+70	°C	
	Storage Temperature	-55		+90	°C	
	Vibration	Test Condition: 0.75mm ;acceleration:10g;10Hz~500Hz, one cycle per 30 min, test 2 hour. (3 times for each 3 directions X , Y , Z), IEC 68-2-06 Test Fc.				
	Shock	50g; 11ms; half sine wave (3 times for each 3 directions X , Y , Z),IEC 68-2-27 Test Ea/Severity 50A.				

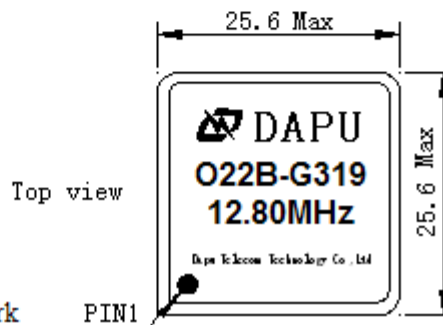
2. Mechanical Structure (mm)



PIN FUNCTION

PIN	FUNCTION
1	OUTPUT
2	GND
3	Nc
4	Nc
5	Vcc

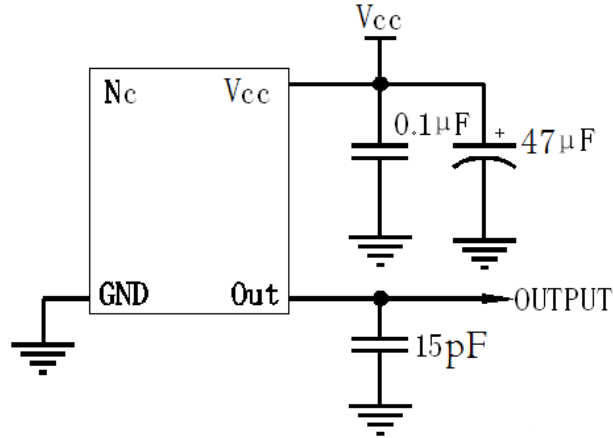
*Tolerance ±0.2mm without mark



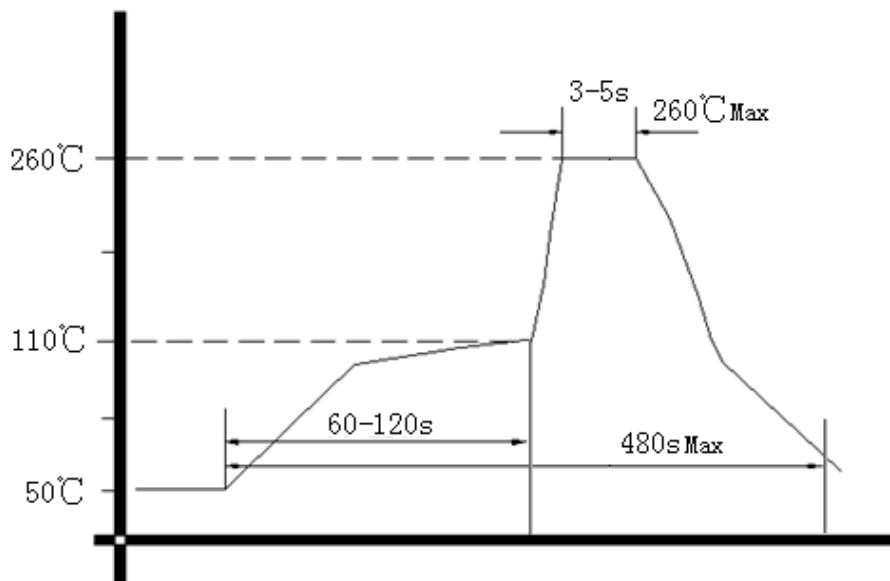


Note: Referential Weight 8.4g

3. Test circuit



4. Wave Soldering Curve (RoHS)



5. Package: PVC Tube, 9pcs

