

Travelling Merchant: _____

DATASHEET

Standard: T75A-J319-20.00MHz

| Plot | | | The Label |
|-------|---------|----------|------------------------|
| Drew | Audited | Approved | Stamp, please! Thanks! |
| | | | |
| Date: | | | |

Guangdong Dapu Telecom Technology Co.,Ltd

Bldg13,.N.Ind.Zone,SSL Industry Park, Dongguan City, Guangdong Province, China

TEL: 0086-0769-88010888 FAX: 0086-0769-81800098



The Parameter of Product

MODEL: T75A-J319-20.00MHz

1. Output

- 1.1. Frequency 20.00MHz
- 1.2. Waveform HCMOS
 $V_{OH} \geq 0.9V_{DD}, V_{OL} \leq 0.1V_{DD}$
- 1.3. Duty Cycle 45%~55% @ 50%
- 1.4. Rise / Fall Time(10%~90%) $\leq 5ns$
- 1.5. Load 15pF

2. Frequency Stabilities

- 2.1. Tolerance vs. Temperature Range $\leq \pm 2.8 \times 10^{-7}$ @ -5°C ~ +80°C ref. to 25°C
- 2.2. Initial Tolerance $\leq \pm 1.0 \times 10^{-6}$ @ 25°C
- 2.3. Calibration $\leq \pm 4.6 \times 10^{-6}$ @ 25°C, Temperature -5°C to 80°C,
Supply Voltage 3.3V±5% ,Load
15pF±5%,Reflow Soldering and
Ageing 20 years
- 2.4. Aging $\leq \pm 2.0 \times 10^{-8}$ /day
 $\leq \pm 1.0 \times 10^{-6}$ / first year

3. Power Supply

- 3.1. Operating Voltage +3.3Vdc(unalterable)

4. Current

- 4.1. Operating Current 4mA(Typical)

5. Phase Noise (Typical)

- 5.1. 10Hz -78dBc/Hz
- 5.2. 100Hz -110dBc/Hz
- 5.3. 1KHz -133dBc/Hz
- 5.4. 10KHz -145dBc/Hz
- 5.5. 100KHz -150dBc/Hz

6. Environmental Conditions

- 6.1. Operable Temperature Range -5°C to +80°C
- 6.2. Storage Temperature Range -55°C to +125°C
- 6.3. Vibration Test Condition: 0.75mm ;acceleration:10g;50Hz~
2000Hz, one cycle per 30 min, test 2 hour. (3 times for
each 3 directions X , Y , Z)
- 6.4. Shock 100g; 11ms; half sine wave (3 times for each 3

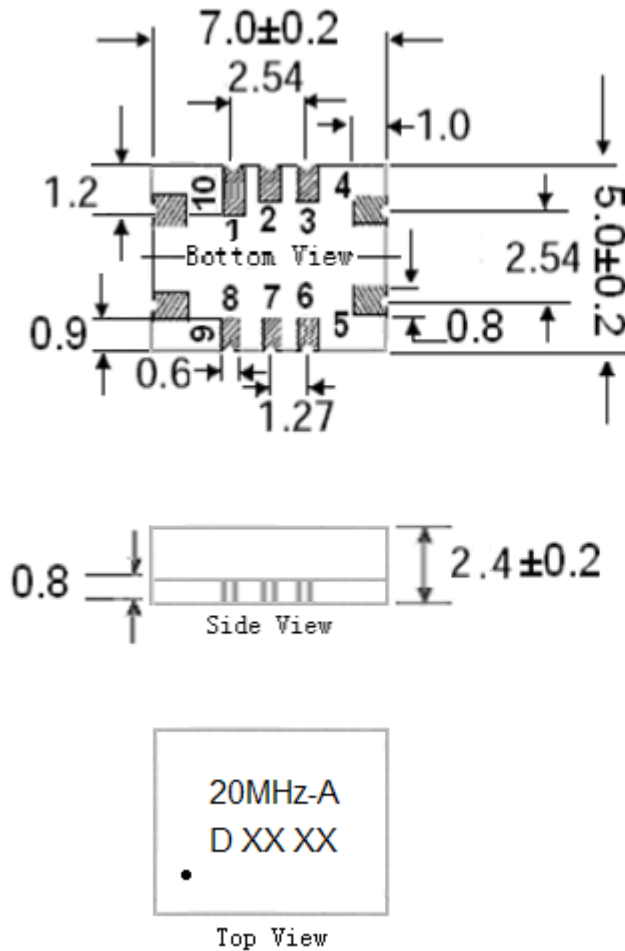


6.5. Drop

directions X ,Y, Z),IEC 68-2-27 Test Ea/Severity 50A.

Test Condition: free drop on steel-made surface or rigid planes from a height of 100cm,IEC 68-2-32.

7. Mechanical Structure (mm)



Pad Connections

- 1 N/C
- 2.N/C
- 3.N/C
- 4.GND
- 5.Output
- 6.N/C
- 7.N/C
- 8.Tristate Control*
- 9. +Vdd
- 10. N/C OR GND

Note1: The bottom view means that the stitches are against the people

Unit: mm

Note2:

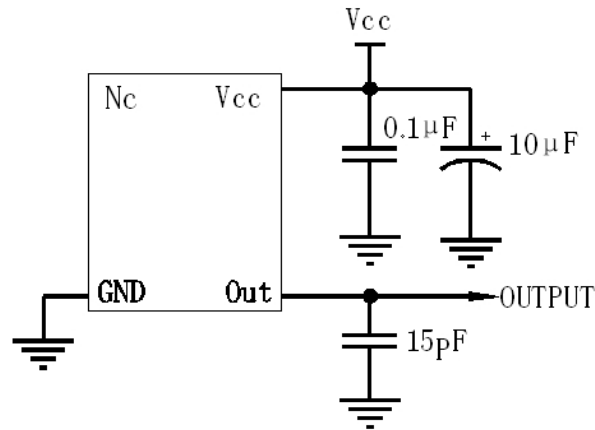
- (1) "1" pin is at right angles to the longest
- (2) Enable: "1" or open
Disable: "0"

Note3: D XX XX

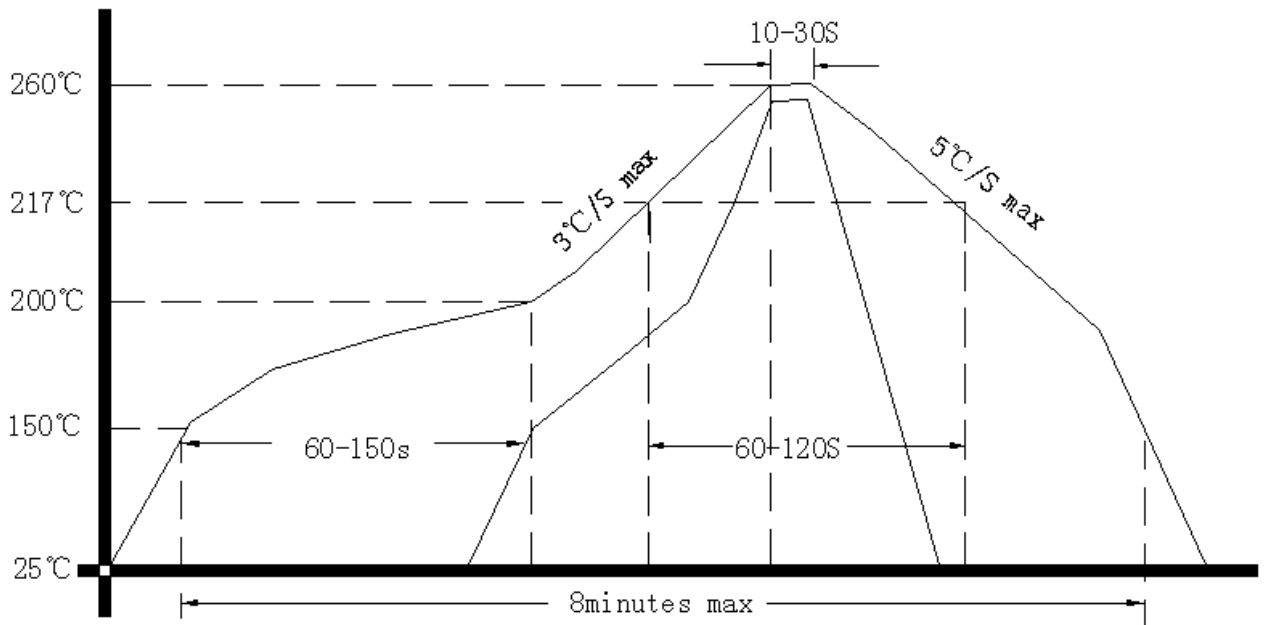
- (1) D Indicate DAPU
- (2) the fore xx indicate year of
- (3) the later XX indicate week of



8. Test Circuit



9. Reflow Soldering Curve (RoHS)



10. Package: Tape & Reel (mm)

