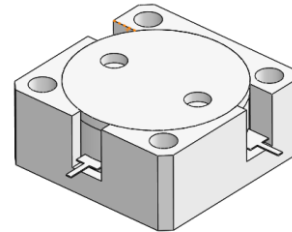




FYT00015C

2400MHz to 2500MHz Single-Junction Drop-In Circulator

Rev. A

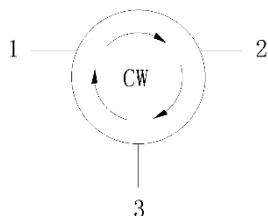


Applications:

- Wireless Infrastructure
- LTE

Features:

- Operating frequency range: 2400MHz to 2500MHz
- Operating temperature range: -40°C to +85°C
- BeO free & RoHS compliant



Block Diagram



Electrical Specifications:

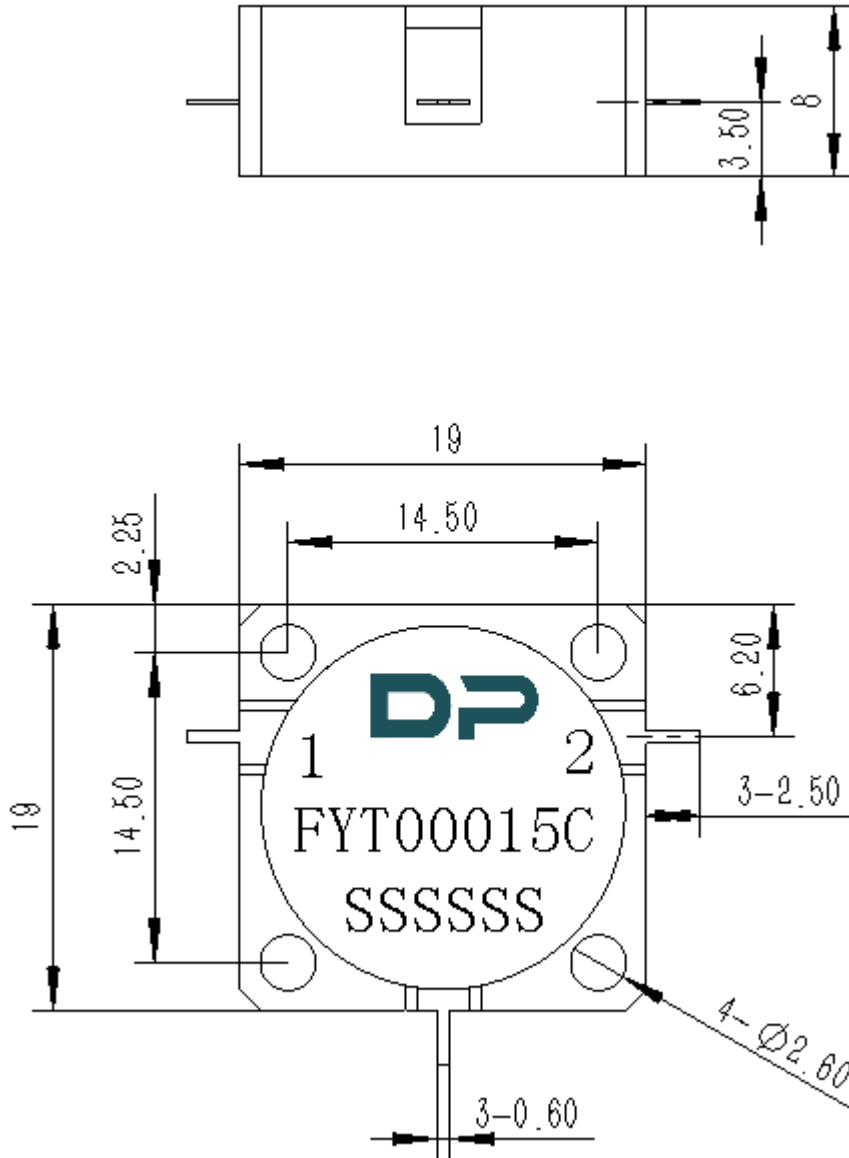
Product Name	FYT00015C	
Frequency	2400~2500	MHz
Direction	CW	
Insertion Loss (Max.)	0.18	dB
Isolation (Min.)	22	dB
Return Loss (Min.)	22	dB
Third Order Intermodulation ²	-75@2 x 35W CW tones, 5MHz spacing,2560MHz—2630MHz -70@2 x 35W CW tones, 5MHz spacing,2500Mhz—2700MHz	dBc
Input Power	500	W
Reverse Power	500	W
Operating Temperature	-40~+85	°C
Storage Temperature	-55~+125	°C
Impedance	Typ: 50	Ω

Notes :

1. Exposure to maximum rating conditions for extended periods may reduce device reliability. There is no damage to device with only one parameter set at the limit and all other parameters set at or below their nominal value. Exceeding any of the limits listed here may result in permanent damage to the device.
2. Performance is guaranteed under the conditions listed in this table and over the operating temperature range.
3. Performance will not degrade by > 10% (Insertion loss > 20%) with an operating temperature of up to 130 °C.



Mechanical Specifications:



Unit : Millimeters

Notes:

1. The housing and circuit are silver-plated.
2. Tolerance is ± 0.2 mm unless otherwise specified.
3. Coplanarity Specification: 0.1 mm maximum.
4. Part Number, Lot Code, and Port Designation are printed on the top side of device.
5. Serial Number format shall be SSSSSS