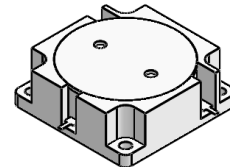




## DP0186C

### 380MHz to 400MHz Single-Junction Drop-in Circulator

Revision A------(2020.01.10)

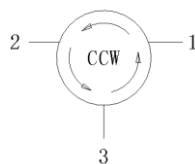


#### Applications:

- Wireless Infrastructure
- Power Amplifier

#### Features:

- Operating frequency range:380MHz to 400MHz
- Operating temperature range: -40°C to +90°C
- Storage temperature range: -50°C to +110°C
- BeOfree&RoHS compliant



Block Diagram



### Electrical Specifications:

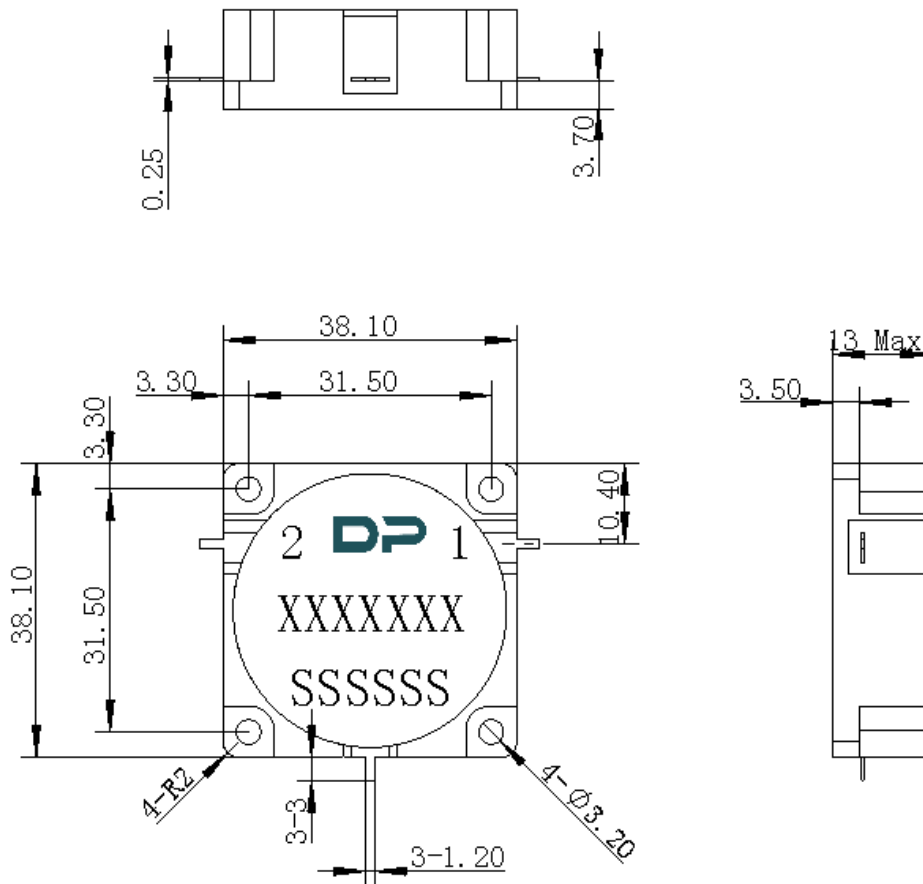
ITEM	SPECIFICATION	
Frequency	380~400	MHz
Direction	CCW	
Impedance	Typ: 50	$\Omega$
Insertion Loss (Max.)	0.25@25°C $\pm$ 5°C 0.40@-40°C ~+90°C	dB
Isolation (Min.)	24@25°C $\pm$ 5°C 20@-40°C ~+90°C	dB
Return Loss (Min.)	24@25°C $\pm$ 5°C 20@-40°C ~+90°C	dB
Power FWD/REV/PEAK	100/100/1000	W
Group delay	2	ns
2nd harmonic	15	dBc
3rd harmonic	5	dBc
Termination/Attenuator	/	W/dB

Notes :

1. Exposure to maximum rating conditions for extended periods may reduce device reliability. There is no damage to device with only one parameter set at the limit and all other parameters set at or below their nominal value. Exceeding any of the limits listed here may result in permanent damage to the device.
2. Performance is guaranteed under the conditions listed in this table and over the operating temperature range.
3. Performance will not degrade by > 10% (Insertion loss > 20%) with an operating temperature of up to 130 °C.



### Mechanical Specifications:



Unit : Millimeters

#### Notes:

1. The housing and circuit are silver-plated.
2. Tolerance  $\pm 0.2$ mm unless otherwise specified.
3. Co-planarity Specification: 0.1mm maximum.
4. Part Number, Lot Code, and Port Designation are printed on the top side of device.
5. Drawing Number format shall be XXXXXXXX
6. Serial Number format shall be SSSSSS