

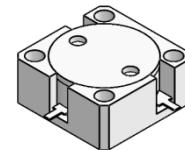


DP0175C

390MHz to 400MHz Single-Junction Drop-in Circulator

Revision A------(2019.12.26)

Revision B(The total height is changed from 10 to 10 Max.) -----(2019.12.30)

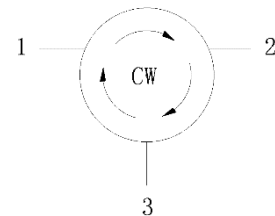


Applications:

- Wireless Infrastructure
- Power Amplifier

Features:

- Operating frequency range:390MHz to 400MHz
- Operating temperature range: -40°C to +85°C
- Storage temperature range: -50°C to +110°C
- BeOfree&RoHS compliant



Block Diagram



Electrical Specifications:

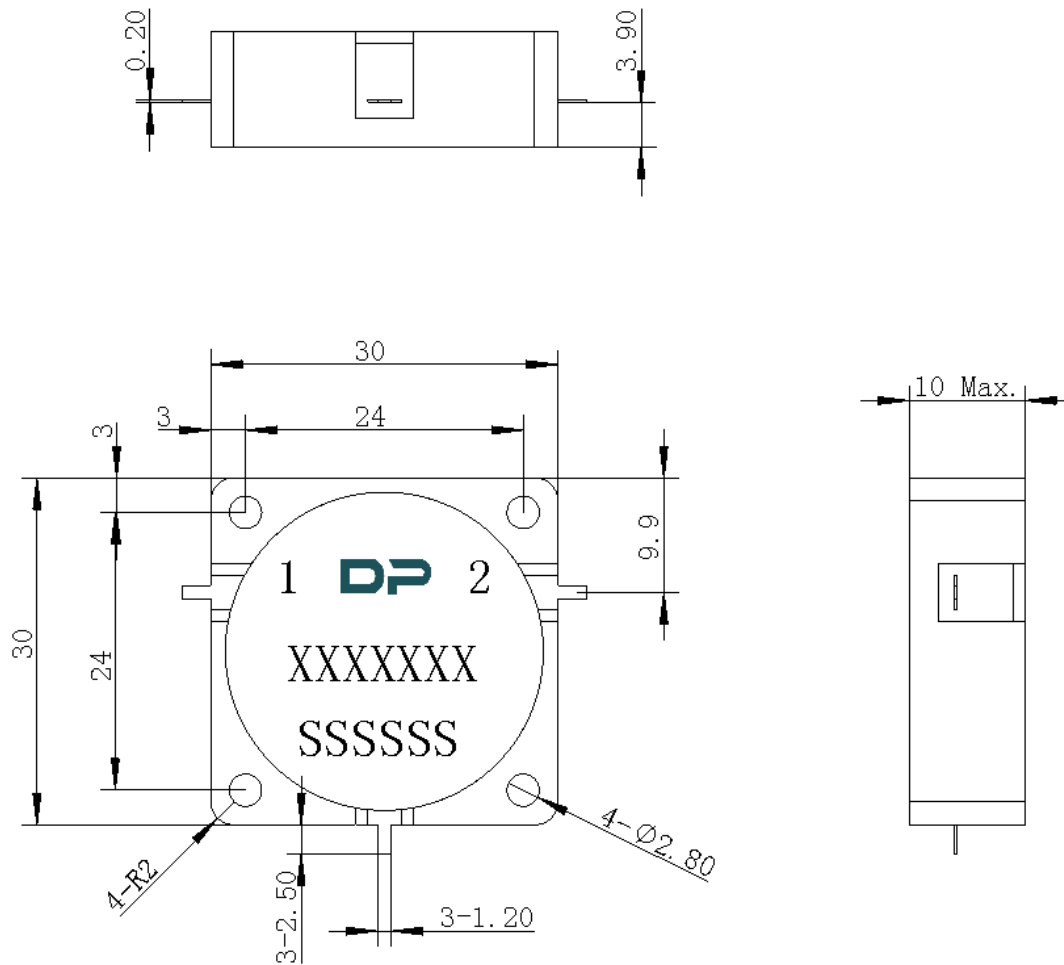
| ITEM | SPECIFICATION | |
|------------------------|---------------|----------|
| Frequency | 390~400 | MHz |
| Direction | CW | |
| Impedance | Typ: 50 | Ω |
| Insertion Loss (Max.) | 0.35 | dB |
| Isolation (Min.) | 20 | dB |
| Return Loss (Min.) | 20 | dB |
| Power FWD/REV/PEAK | 100/100/- | W |
| IMD (Max.) | -75@2x10W | dBc |
| Termination/Attenuator | / | W/dB |

Notes :

1. Exposure to maximum rating conditions for extended periods may reduce device reliability. There is no damage to device with only one parameter set at the limit and all other parameters set at or below their nominal value. Exceeding any of the limits listed here may result in permanent damage to the device.
2. Performance is guaranteed under the conditions listed in this table and over the operating temperature range.
3. Performance will not degrade by > 10% (Insertion loss > 20%) with an operating temperature of up to 130 °C.



Mechanical Specifications:



Unit : Millimeters

Notes:

1. The housing and circuit are silver-plated.
2. Tolerance $\pm 0.2\text{mm}$ unless otherwise specified.
3. Co-planarity Specification: 0.1mm maximum.
4. Part Number, Lot Code, and Port Designation are printed on the top side of device.
5. Drawing Number format shall be XXXXXXX
6. Serial Number format shall be SSSSSS