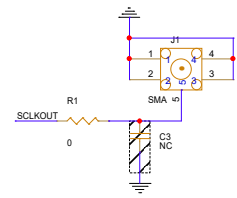
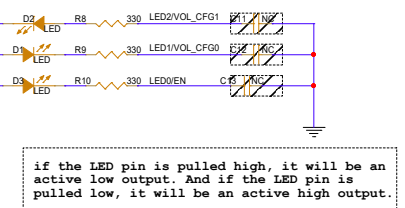
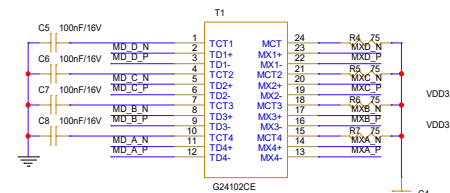
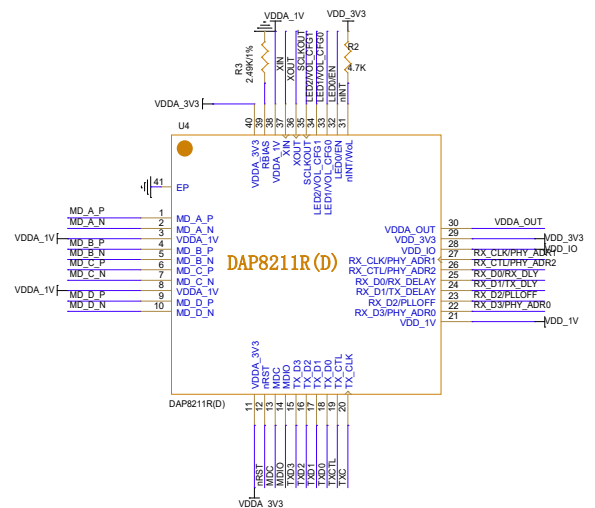
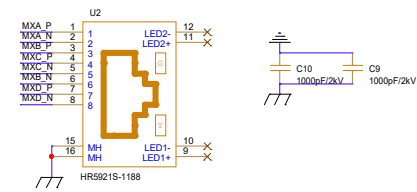


The value of external load capacitor (C1, C2) according to the crystal load capacitance.

When connect an external 25MHz oscillator or clock from another device to XTAL_I pin, keep the XTAL_O floating.
When connect an external 25MHz oscillator or clock from another device to XTAL_O pin, XTAL_I must be shorted to GND.

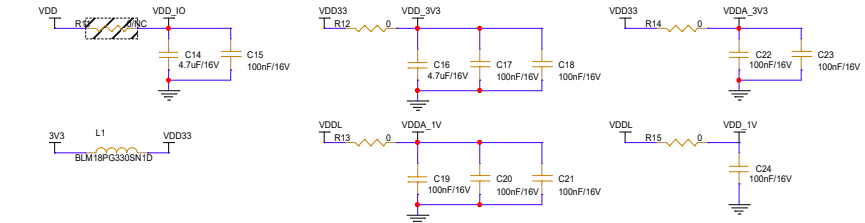


the SMA connector J1 is optional



if the LED pin is pulled high, it will be an active low output. And if the LED pin is pulled low, it will be an active high output.

| CFG_EN | CFG[1:0] | RGMIIVoltage Selection |
|--------|----------|------------------------|
| 1'b1 | 2'b00 | External 3.3V |
| 1'b1 | 2'b01 | External 2.5V |
| 1'b1 | 2'b10 | External 1.8V |
| 1'b1 | 2'b11 | External 1.8V |
| 1'b0 | 2'b01 | Internal 2.5V |
| 1'b0 | 2'b10 | Internal 1.8V |
| 1'b0 | 2'b11 | Internal 1.8V |



VDD can be 3.3V/2.5V/1.8V from external power supply.
R11 is only for external RGMIIVoltage application.
R11 must be removed for internal RGMIIVoltage application.
C14 C15 must always be in existence.

