

Travelling Merchant: \_\_\_\_\_

# DATASHEET

Standard: **T22-S539-48.00MHz**  
\_\_\_\_\_

P/N:  
\_\_\_\_\_

Plot			The Label
Drew	Audited	Approved	Stamp, please! Thanks!
Date: 2022.07.29			

## Guangdong Dapu Telecom Technology Co.,Ltd

Building 5, No.24, Industrial East Road, Songshanhu Park, Dongguan, Guangdong, P.R. China

TEL: 0086-0769-88010888 FAX: 0086-0769-81800098





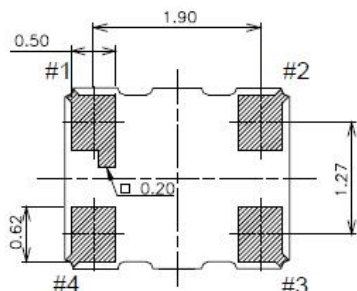
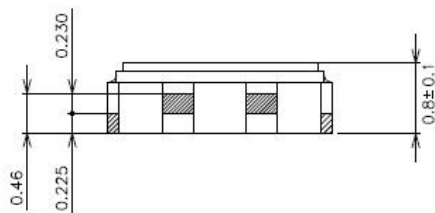
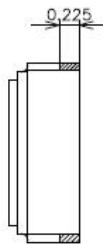
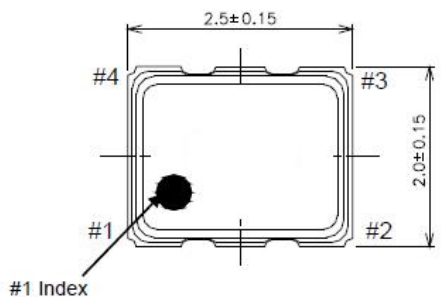
## 1. Electrical Parameters

MODEL: T22-S539-48.00MHz						
Item	Description	Parameters			Unit	Test Condition
		Min.	Typ.	Max.		
Output	Frequency	48.00			MHz	
	Output Waveform	Clipped Sine Wave				
	Vp-p	0.8			V	
	Startup time			2	ms	
	Symmetry	40		60	%	GND level(DC cut)
	Harmonics			-5	dBc	
	Load	10KΩ//10pF				
Frequency Stabilities	Tolerance	-1.5		+1.5	$\times 10^{-6}$	After 2 times reflow, Ref. to before reflow frequency, leave after reflow in 2h or more at room ambient.
	Temperature Stability	-0.5		+0.5	$\times 10^{-6}$	-30°C to 85°C, T <sub>A</sub> =25°C.
	Frequency Tolerance vs. Supply Voltage	-0.2		+0.2	$\times 10^{-6}$	Measurement referenced to frequency observed T <sub>A</sub> =25°C, V <sub>cc</sub> ±5% and O <sub>Load</sub> =10KΩ//10pF.
	Frequency Tolerance vs. Load	-0.2		+0.2	$\times 10^{-6}$	10% load change measurement referenced to frequency observed with T <sub>A</sub> =25°C, V <sub>cc</sub> ±5%, O <sub>Load</sub> =10KΩ//10pF.
	Aging	-1		+1	$\times 10^{-6}$	@25°C, Per year.
Phase Noise	Phase Noise @25°C			-105	dBc/Hz	100Hz
				-125		1KHz
				-145		10KHz
				-150		100KHz
Power Supply	Current Consumption			2	mA	@25°C, V <sub>cc</sub> ±5%, O <sub>load</sub> =10KΩ//10pF.
	Supply Voltage	1.8	2.8	3.3	V	



Environmental Conditions	Operable Temperature	-30		+85	°C	
	Storage Temperature	-40		+85	°C	
	ESD Level	Human Body Model, class2: 2000V to 4000V; ANSI/ESDA/JEDEC JS-001-2010.				
		Machine Model, class B: 200V to 400V; JEDEC JESD22-A115C.				
	Moisture Sensitivity Level	Level 2.				
	Vibration	Test Condition: 0.75mm ;acceleration:10g;10Hz~2000Hz, one cycle per 30 min, test 2 hours. (3 times for each 3 directions X ,Y , Z ).IEC 68-2-06 Test Fc.				
Shock	100g; 6ms; half sine wave (3 times for each 3 directions X ,Y, Z ),IEC 68-2-27 Test Ea/Severity 50A.					
Full Package Storage	Relative humidity (%)	20% ~ 70%				
	Temperature (°C)	-10~35°C				

## 2. Mechanical Structure(mm)



### Marking

- (1) Frequency      48.0 (MHz, 3 digits)
- (2) Model code     **BN**
- (3) Date code      Year (1digit) +Week (2digits)  
e.g.2016/01/01 → 601

unit: mm

Dimensional Tolerance: ±0.15

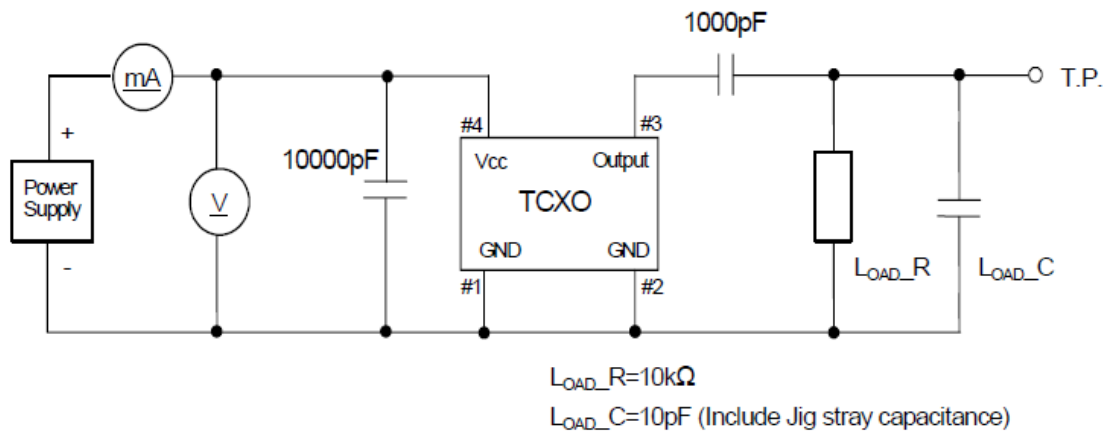
(Unless otherwise noted)

### Pin Connections

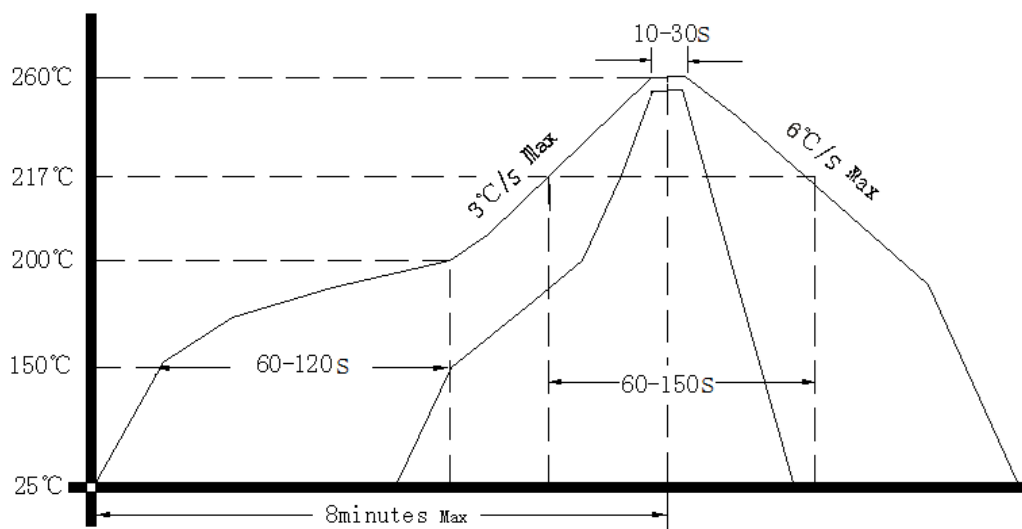
Pin No.	Connection
#1	GND
#2	GND
#3	Output
#4	V <sub>cc</sub>



### 3. Test Circuit



### 4. Reflow Soldering Curve (RoHS)



### 5. Package: Tape & Reel (mm)

