

Travelling Merchant: _____

DATASHEET

Standard: T22-S513-12.80MHz

P/N: _____

Plot			The Label
Drew	Audited	Approved	Stamp, please! Thanks!
Date: 2022.08.10			

Guangdong Dapu Telecom Technology Co.,Ltd

Building 5, No.24, Industrial East Road, Songshanhu Park, Dongguan, Guangdong, P.R. China

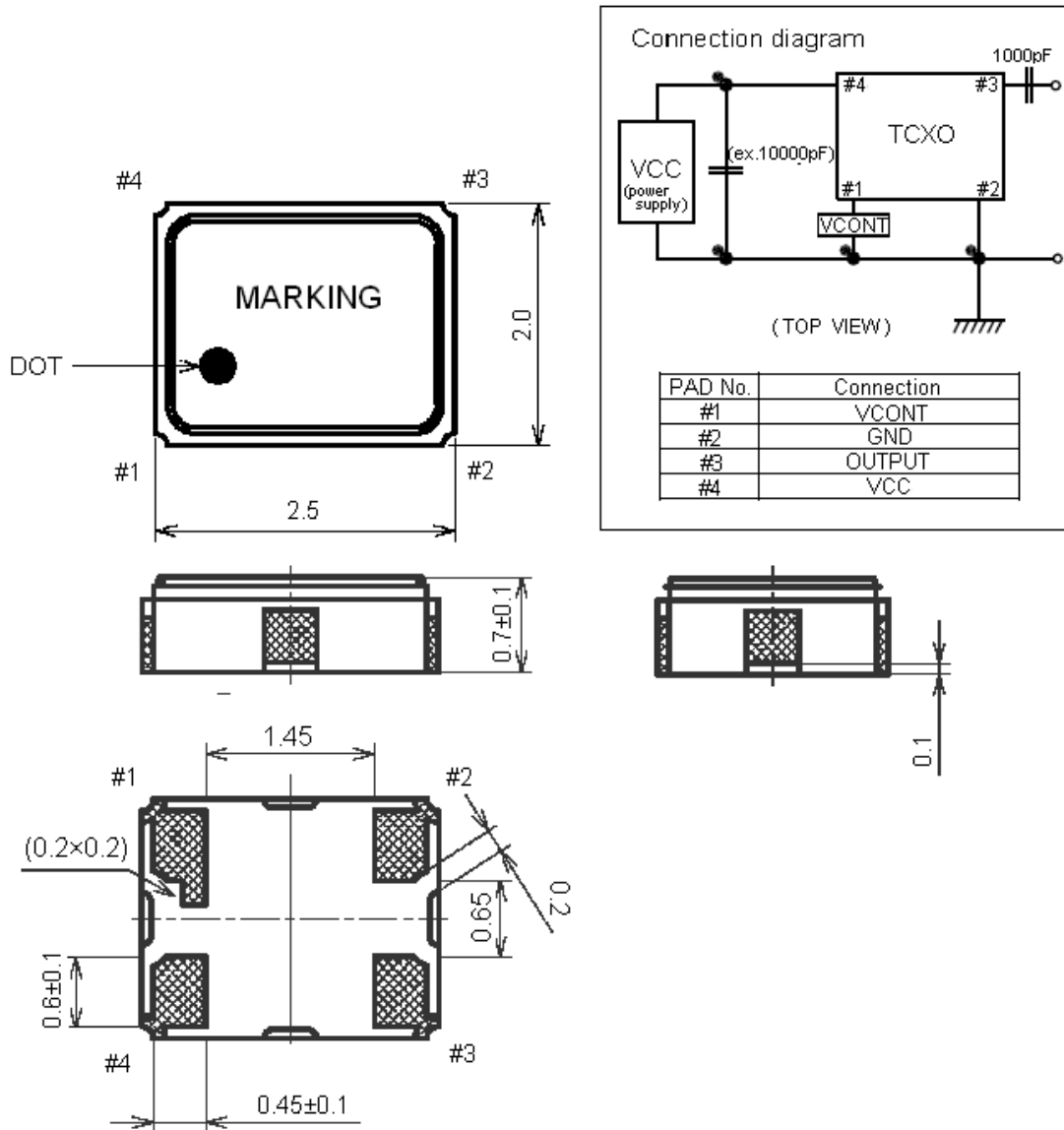
TEL: 0086-0769-88010888 FAX: 0086-0769-81800098

Electrical Parameters

MODEL: T53-S513-12.80								
No.	Parameters		SYM.	Electrical Spec.				Notes
				Min.	Typ.	Max.	Units	
1	Nominal Frequency		FL	12.80			MHz	
2	Supply Voltage		VDD	2.85	3.0	3.15	V	
3	Current Drain		-	-	-	1.5	mA	
4	Output Level		-	0.8	-	-	Vp-p	
5	Output Waveform		-	Clipped Sine wave			-	
6	Standard Output Load		-	1K Ω //5pF			-	
7	Frequency Stability	vs. Tolerance	-	-1.5	-	+1.5	$\times 10^{-6}$	at +25 \pm 2 $^{\circ}$ C, 2hours or more at room ambient after 2 times reflow, based on nominal frequency
8		vs. Temperature	-	-0.5	-	+0.5	$\times 10^{-6}$	T _A varied from -30 $^{\circ}$ C to +85 $^{\circ}$ C, Ref. to Frequency T _A =25 $^{\circ}$ C
			-	-2	-	+2	$\times 10^{-6}$	T _A varied from -40 $^{\circ}$ C to -30 $^{\circ}$ C, Ref. to Frequency T _A =25 $^{\circ}$ C
9		vs. Load	-	-0.2	-	+0.2	$\times 10^{-6}$	\pm 10% load change measurement referenced to frequency observed with T _A = 25 $^{\circ}$ C, V _{cc} =3.0V, O _{Load} = 1K Ω //5pF .
10		vs. Supply Voltage	-	-0.2	-	+0.2	$\times 10^{-6}$	V _{cc} varied from 2.85V to 3.15V
11	Operating Temperature Range		-	-40	~	+85	$^{\circ}$ C	
12	Storage Temperature		-	-40	~	+85	$^{\circ}$ C	
13	Start Up Time		-	-	-	2	ms	@90% of final Vout level
14	Aging		-	-1	-	+1	$\times 10^{-6}$	over 1st Year
15	Frequency Tuning Range		-	-15	-	-10	$\times 10^{-6}$	V _c = 0.5 V. measurement referenced to V _c =1.5V
16			-	+10	-	+15	$\times 10^{-6}$	V _c =2.5V.measurement referenced to V _c =1.5V
17	Linearity		-	-	-	10	%	
18	Slope			Positive				
19	Input Impedance		-	500	-	-	K Ω	
20	Phase Noise	@ 10Hz Offset	-	-	-	-88	dBc/Hz	
21		@ 100Hz Offset	-	-	-	-114		
22		@ 1KHz Offset	-	-	-	-135		
23		@ 10KHz Offset	-	-	-	-145		
24		@ 100KHz Offset	-	-	-	-145		
25		@ 1MHz Offset	-	-	-	-150		

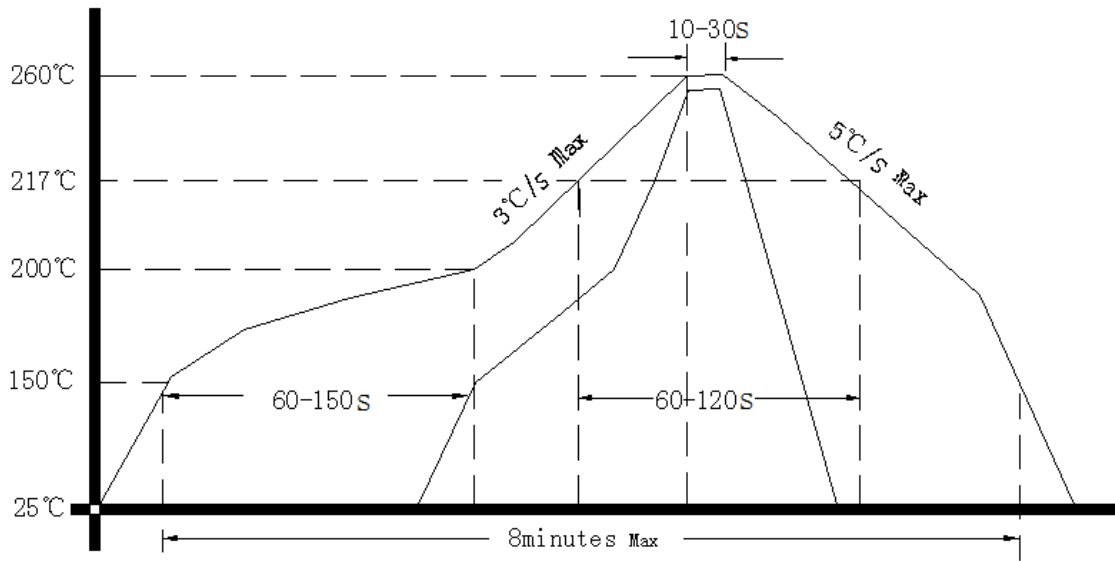
26	ESD Level	Human Body Model,class2: 2000V to 4000V; ANSI/ESDA/JEDEC JS-001-2010.
27		Machine Model, class B: 200V to 400V; ANSI/ESDA/JEDEC JS-001-2010.
28	Moisture Sensitivity Level	Level 2.
29	Vibration	Test Condition: 0.75mm ;acceleration:10g;10Hz~2000Hz, one cycle per 30 min, test 2 hour. (3 times for each 3 directions X ,Y , Z) .IEC 68-2-06 Test Fc.
30	Shock	100g; 6ms; half sine wave (3 times for each 3 directions X ,Y , Z),IEC 68-2-27 Test Ea/Severity 50A.

2、 Mechanical Structure(mm)



Note1: Tolerance ± 0.1 mm

3、 Reflow Soldering Curve (RoHS)



4、 Package: Tape & Reel (mm)

