

Travelling Merchant: _____

DATASHEET

Standard: **T21-S563-12.80MHz**

Plot			The Label
Drew	Audited	Approved	Stamp, please! Thanks!
Date: 2022.02.24			

Guangdong Dapu Telecom Technology Co.,Ltd

Building 5, No.24, Industrial East Road, Songshanhu Park, Dongguan, Guangdong, P.R. China

TEL: 0086-0769-88010888 FAX: 0086-0769-81800098

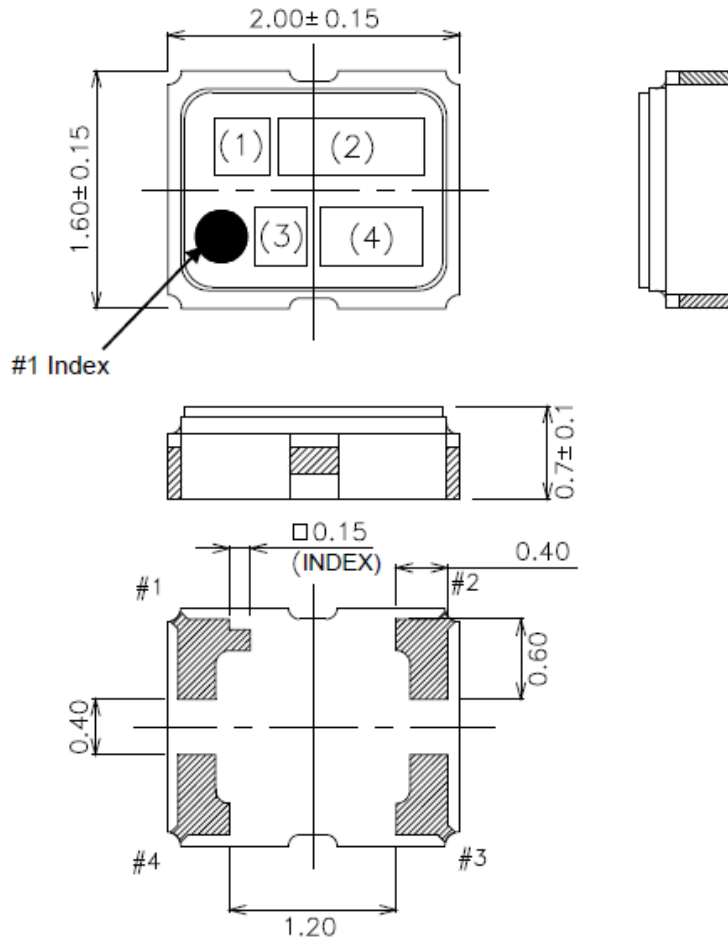


1、 Electrical Parameters

MODEL: T21-S563-12.80MHz							
No.	Parameters	SYM.	Electrical Spec.				Notes
			Min.	Typ.	Max.	Units	
1	Nominal Frequency	FL	12.80			MHz	One frequency-division
2	Supply Voltage	VDD	2.85	3.0	3.15	V	
3	Current Drain	-	-	-	1.5	mA	
4	Output Level	-	0.8	-	-	Vp-p	
5	Output Waveform	-	Clipped Sine wave			-	
6	Standard Output Load	-	10KΩ//10pF			-	
7	Frequency Stability	vs.Tolerance	-1.5	-	+1.5	$\times 10^{-6}$	After 2 times reflow Ref. to Nominal Frequency
8		vs. Temperature	-0.5	-	+0.5	$\times 10^{-6}$	T _A varied from -40°C to +85°C, Ref. to Frequency T _A =25°C
9		vs. Load	-0.2	-	+0.2	$\times 10^{-6}$	L _{LOAD_R} //C=(10k Ω//10pF)± 10%
10		vs. Supply Voltage	-0.2	-	+0.2	$\times 10^{-6}$	V _{cc} =+3.0V ± 5%
11	Operating Temperature Range	-	-40	~	+85	°C	
12	Storage Temperature	-	-40	~	+85	°C	
13	Aging	-	-1.0	-	+1.0	$\times 10^{-6}$	1st Year
14	Duty Cycle	-	40	~	60	%	
15	Start Up Time	-	-	-	2.0	ms	@90% of final Vout level
16	Frequency Tuning Range	-	-15	-	-9	$\times 10^{-6}$	V _c = 0.5 V. measurement referenced to V _c =1.5V
17		-	+9	-	+15	$\times 10^{-6}$	V _c =2.5V.measurement referenced to V _c =1.5V
18	Linearity	-	-	-	10	%	
19	Slope		Positive				
20	Input Impedance	-	500	-	-	KΩ	
21	Phase Noise	-	-	-	-130	dBc/Hz	@ 1KHz Offset
26	ESD Level	Human Body Model,class2: 2000V to 4000V; ANSI/ESDA/JEDEC JS-001-2010.					
		Machine Model, class B: 200V to 400V; JEDEC JESD22-A115C.					
27	Moisture Sensitivity Level	Level 2.					
28	Vibration	Test Condition: 0.75mm ;acceleration:10g;10Hz~2000Hz, one cycle per 30 min, test 2 hour. (3 times for each 3 directions X , Y , Z) .IEC 68-2-06 Test Fc.					
29	Shock	100g; 6ms; half sine wave (3 times for each 3 directions X , Y , Z) ,IEC 68-2-27 Test Ea/Severity 50A.					



2、 Mechanical Structure(mm)



Pin Connections

Pin No.	Connection
#1	Vcont
#2	GND
#3	Output
#4	Vcc

Marking

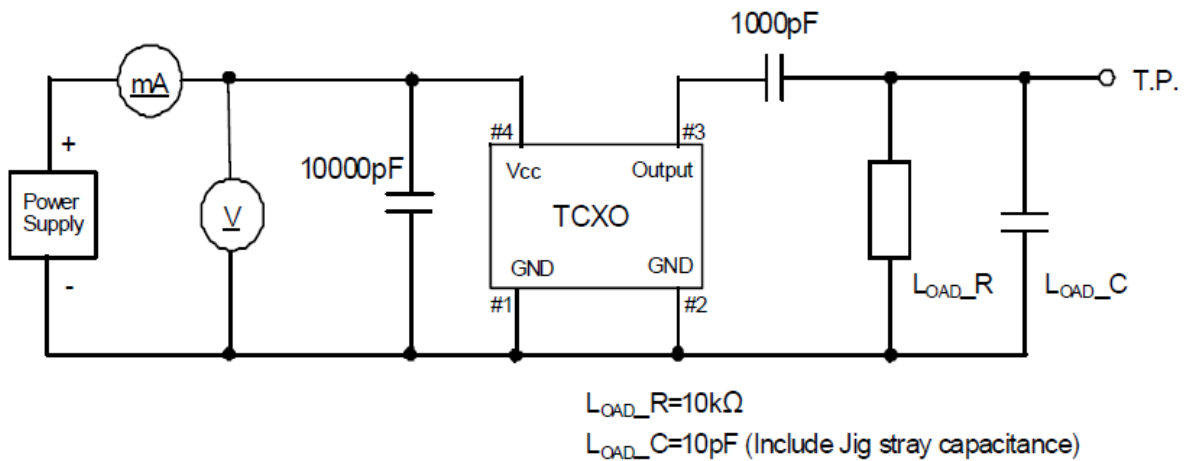
- (1) Model code AN
- (2) Frequency 12.8 (MHz, 3digits)
- (3) Logo D
- (4) Date code Year (1digit) +Week (2digits)
e.g.2015/1/1 → 501

unit: mm

Dimensional Tolerance: ±0.1

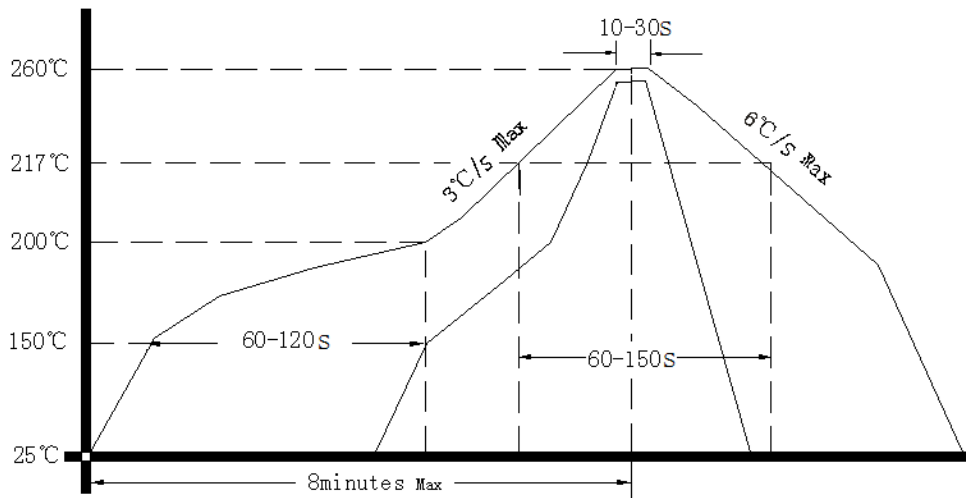
(Unless otherwise noted)

3、 Test Circuit





4、 Reflow Soldering Curve (RoHS)



5、 Package: Tape & Reel (mm)

