

Customer Code: _____

DATASHEET

DAPU P/N: **O22S-0808-10.00MHz**

Customer P/N: _____

DAPU			Customer Approval
Drew	Audited	Approved	Stamp, please! Thanks!
Date: 2024.05.15			

Guangdong Dapu Telecom Technology Co.,Ltd

Building 5, No.24, Industrial East Road, Songshanhu Park, Dongguan, Guangdong, P.R. China

TEL: 0086-0769-88010888 FAX: 0086-0769-81800098



1. Electrical Parameters

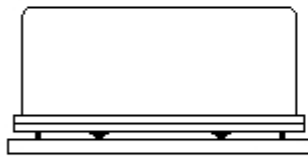
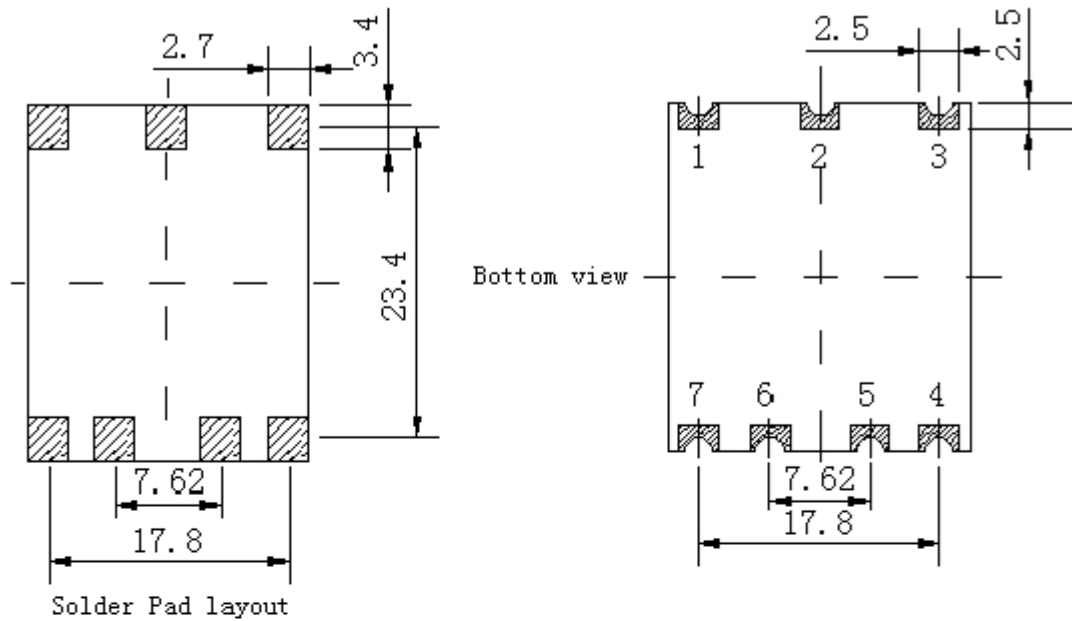
MODEL: O22S-0808-10.00MHz						
Item	Description	Parameters			Unit	Test Condition
		Min.	Typ.	Max.		
Output	Frequency	10.00			MHz	
	Output Waveform	LVTTTL				
	Output Low Voltage			0.4	V	V _{cc} =3.3V, Load =15pF
	Output High Voltage	2.4			V	V _{cc} =3.3V, Load =15pF
	Duty Cycle	45		55	%	@50%
	Spurious Suppression			-90	dBc	
	Rise/Fall Time			10	ns	10%~90% V _{cc}
	Load	13.5	15	16.5	pF	
	Start up time			1	s	90% V _{cc} to the correct frequency output time
Frequency Stabilities	Frequency Accuracy	-0.9		+0.9	× 10 ⁻⁶	Within 90 days after shipment and 15 minutes warm up time (before reflow), Measurement referenced to nominal frequency
		-1		+1	× 10 ⁻⁶	After 2 hours and 5 minutes warm up time (after reflow), Measurement referenced to the nominal frequency.
	Frequency Stability vs. Operating Temperature Range	-1		+1	× 10 ⁻⁹	T _A varied from -40°C to 85°C, V _{cc} =3.3V, and Load = 15pF. Measurement referenced to frequency observed With f _{ref} =(f _{max} +f _{min})/2, V _{cc} =3.3V . Air condition
	Frequency Stability vs. Supply Voltage	-0.5		+0.5	× 10 ⁻⁹	measurement referenced to frequency observed T _A =25°C, V _{cc} varied from 3.135V to 3.465V, and O _{Load} =15pF.
	Frequency Tolerance vs Load	-0.5		+0.5	× 10 ⁻⁹	10% load change measurement referenced to frequency observed with T _A =25°C, V _{cc} =3.3V, and O _{Load} =15pF.
	Short-Term Stability: Allan Variance			1	× 10 ⁻¹²	Temperature stability, no EMI\EMC or other interference, test after power for 1hour ref. to 25°C; 1s.
	Aging Tolerance per day	-1		+1	× 10 ⁻⁹	V _{cc} , T _A constant Measurement referenced to frequency observed with T _A =25°C, V _{cc} =3.3V. and after 30 days of operation
	Aging Tolerance 1 Year	-0.05		+0.05	× 10 ⁻⁶	Calculation method:
	Aging Tolerance 10 Years	-0.5		+0.5	× 10 ⁻⁶	Annual Aging Rate: 50*daily aging rate. 10-Years Aging Rate: 10* annual aging rate.



Power Supply	Supply Voltage	3.135	3.3	3.465	V	
	Steady Consumption			450	mA	@25°C
	Warm up current			1000	mA	When all temp range
	Warm Up	-0.1		+0.1	$\times 10^{-6}$	After warm up 3 minutes. Measurement referenced to frequency observed with TA = 25°C, V _{cc} =3.3V. and after 24 hours of operation.
Phase Noise	Phase Noise			-109	dBc/Hz	1Hz
				-129		10Hz
				-140		100Hz
				-149		1KHz
				-154		10KHz
				-155		100KHz
				-155		1MHz
Environmental Conditions	Operable Temperature range	-40		+85	°C	
	Storage Temperature	-55		+105	°C	
	Temperature Rate of Change			1	°C/min	
	Air-tightness			1×10^{-9}	Pa.cm ³ /s	Crystal cavity
				1×10^{-5}	Pa.cm ³ /s	Shell
	ESD Level	Human Body Model, class2: 2000V to 4000V; ANSI/ESDA/JEDEC JS-001-2010. Machine Model, class B: 200V to 400V; JEDEC JESD22-A115C.				
	Moisture Sensitivity Level	Level 2.				
	Vibration	Test Condition: 0.75mm ;acceleration:10g;10Hz~500Hz, one cycle per 30 min, test 2 hour. (3 times for each 3 directions X ,Y , Z), IEC 68-2-06 Test Fc.				
Shock	50g; 11ms; half sine wave (3 times for each 3 directions X ,Y , Z),IEC 68-2-27 Test Ea/Severity 50A.					
Full Package Storage	Relative Humidity (%)	20%~70%				
	Temperature (°C)	-10~35°C				



2. Mechanical Structure (mm)



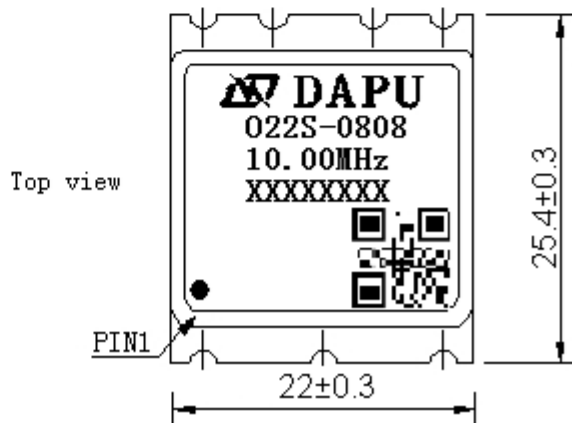
Right view



Side view

PIN FUNCTION

PIN	NOTATION	FUNCTION
1	NC	Not Connect
2	NC	Not Connect
3	VCC	Supply Voltage
4	OUTPUT	RF Output
5,6	NC	Not Connect
7	GND	GND



Note1: Tolerance ± 0.20mm without mark

Note2: The first two xx representative: year

After two xx representative: week

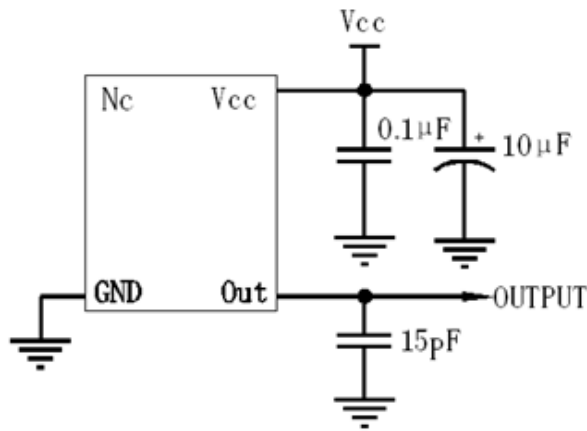
At last four xxxx representative: serial number

Note3: Referential weight 10g

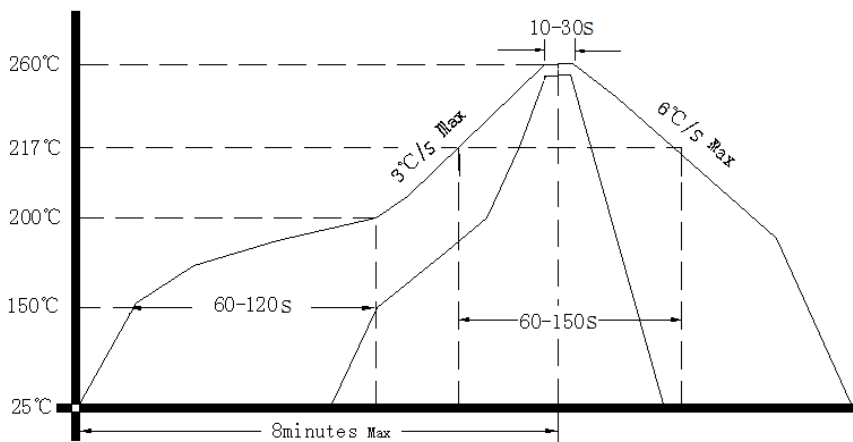
Note4: NC is not connect



3. Test Circuit



4. Reflow Soldering Curve (RoHS)



Note: Passing through reflow upside down is not supported

5. Package: Tape & Reel (mm)

