

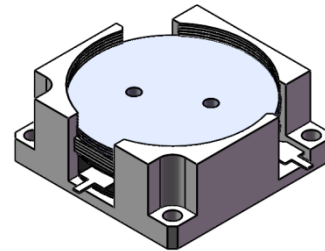


## DP3601C

### ENG PART:DP-31.8X31.8CD-1800T2700-CW

1800MHz to 2700MHz Single-Junction Drop-in Circulator

REV.	DESCRIPTION	REVISOR	DATE	APPROVED
A	SAME AS REV.2	ZZ.Zhu	2024/12/17	Nick

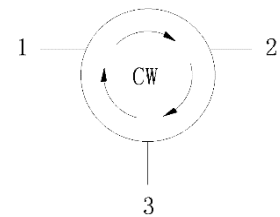


#### Applications:

- Wireless Infrastructure
- Power Amplifier

#### Features:

- Operating frequency range: 1800MHz to 2700MHz
- Operating temperature range: -10°C to +75°C
- Storage temperature range: -55°C to +105°C
- BeOfree&RoHS compliant



Block Diagram



**Electrical Specifications:**

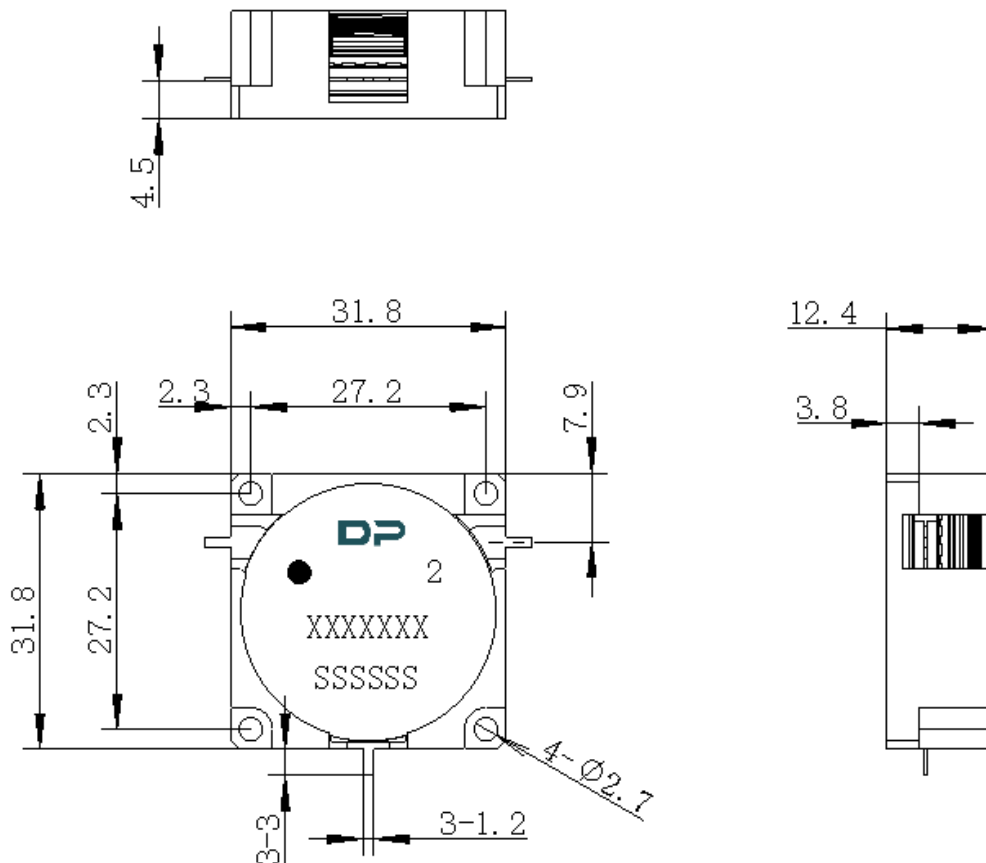
ITEM	SPECIFICATION	
Frequency	1800~2700	MHz
Direction	CW	
Impedance	Typ: 50	$\Omega$
Insertion Loss (Max.)	0.4@25 $\pm$ 5 $^{\circ}$ C 0.5@-10~+75 $^{\circ}$ C	dB
Isolation (Min.)	21@25 $\pm$ 5 $^{\circ}$ C 17@-10~+75 $^{\circ}$ C	dB
Return Loss (Min.)	21@25 $\pm$ 5 $^{\circ}$ C 17@-10~+75 $^{\circ}$ C	dB
3rd IMD (Max.)	-65@2x45dBm CW Tones, spacing 5MHz	dBc
Group delay	/	ns
Resonance point of out-off-band	/	MHz
2nd harmonicsuppression	/	dBc
3rd harmonicsuppression	/	dBc
Power FWD/REV/PEAK	250/250/2000	W
Phase Consistency	/	$^{\circ}$
Input Impedance ,real	/	$\Omega$
Input Impedance ,imaginary	/	j $\Omega$
Output Impedance ,real	/	$\Omega$
Output Impedance ,imaginary	/	j $\Omega$

Notes:

1. Exposure to maximum rating conditions for extended periods may reduce device reliability. There is no damage to device with only one parameter set at the limit and all other parameters set at or below their nominal value. Exceeding any of the limits listed here may result in permanent damage to the device.
2. Performance is guaranteed under the conditions listed in this table and over the operating temperature range.



### Mechanical Specifications:



Unit: Millimeters

#### Notes:

1. The housing is nickel-plated and the circuit is silver-plated.
2. Tolerance  $\pm 0.2$  mm unless otherwise specified.
3. Co-planarity Specification: 0.1 mm maximum.
4. Part Number, Lot Code, and Port Designation are printed on the top side of device.
5. The **XXXXXXX** on the label represents the part number
6. The **SSSSSS** on the label represents the serial number
7. The black dot on the label represents the input port