

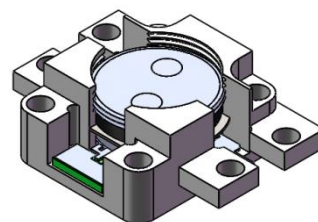


## DP3304S

### ENG PART:DP-12.7ID-6.0T18.0-CCW

6.0GHz to 18.0GHz Single-Junction Drop-in Isolator

REV.	DESCRIPTION	REVISOR	DATE	APPROVED
A	Creating datasheet	ZZ.Zhu	2024/11/18	Nick

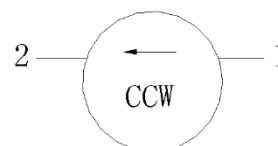


#### Applications:

- Wireless Infrastructure
- Power Amplifier

#### Features:

- Operating frequency range: 6.0GHz to 18.0GHz
- Operating temperature range: -30°C to +85°C
- Storage temperature range: -40°C to +135°C
- Small surface-mount package delivered on T&R
- BeOfree&RoHS compliant



Block Diagram



### Electrical Specifications:

ITEM	SPECIFICATION	
Frequency	6.0~18.0	GHz
Direction	CCW	
Impedance	Typ: 50	$\Omega$
Insertion Loss (Max.)	1.2@25±5°C 1.3@-30~+85°C	dB
Isolation (Min.)	11@25±5°C 10@-30~+85°C	dB
Return Loss (Min.)	11.7@25±5°C 11@-30~+85°C	dB
3rd IMD (Max.)	/	dBc
Extend frequency	/	MHz
Group delay	/	ns
2nd harmonic	/	dBc
3rd harmonic	/	dBc
Power FWD/REV/PEAK	20/20/-	W
Termination/Attenuator	20	W/dB
Finish	Housing is silver plating	

Notes:

1. Exposure to maximum rating conditions for extended periods may reduce device reliability. There is no damage to device with only one parameter set at the limit and all other parameters set at or below their nominal value. Exceeding any of the limits listed here may result in permanent damage to the device.
2. Performance is guaranteed under the conditions listed in this table and over the operating temperature range.
3. Performance will not degrade by > 10% (Insertion loss > 20%) with the operating temperature up to 130 °C.

