

Customer Code: \_\_\_\_\_

# DATASHEET

DAPU P/N: 023B-A345-10.00MHz

Customer P/N: \_\_\_\_\_

DAPU			Customer Approval
Drew	Audited	Approved	Stamp, please! Thanks!
Date: 2024.06.06			

## Guangdong Dapu Telecom Technology Co.,Ltd

Building 5, No.24, Industrial East Road, Songshanhu Park, Dongguan, Guangdong, P.R. China

TEL: 0086-0769-88010888 FAX: 0086-0769-81800098



### Table of amendment

Version	Revision contents	Prepared by	Revised date
1.0	The first issued	<i>Amway</i>	2024.04.22
1.1	Revise “Power Supply” typo	<i>Amway</i>	2024.06.06



## 1. Electrical Parameters

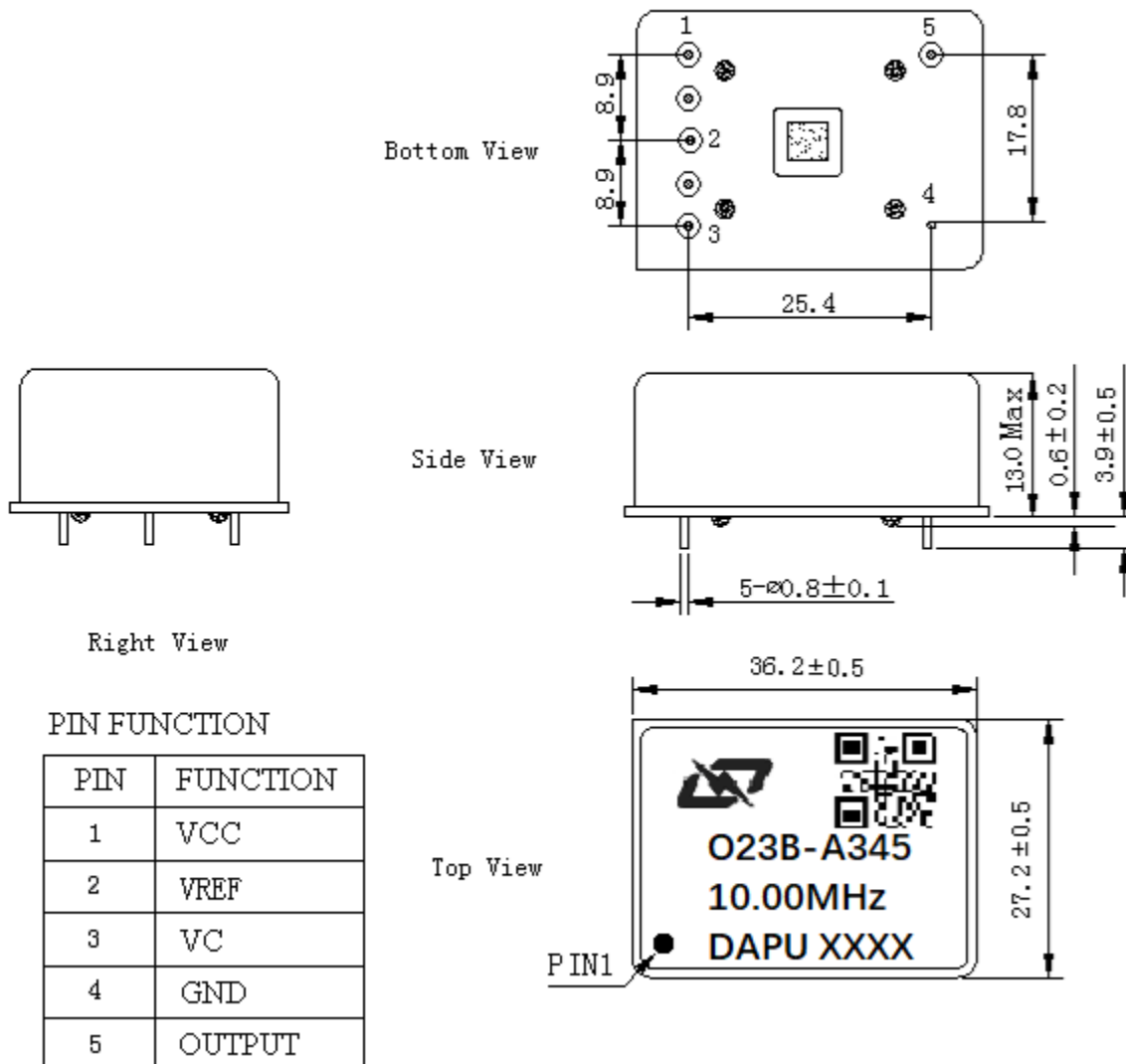
MODEL: O23B-A345-10.00MHz						
Item	Description	Parameters			Unit	Test Condition
		Min.	Typ.	Max.		
Output	Frequency	10.00			MHz	
	Output Waveform	HCMOS				
	Output Low Voltage			0.4	V	$V_{cc}=12V, O_{load}=15pF$
	Output High Voltage	3.3			V	$V_{cc}=12V, O_{load}=15pF$
	Duty Cycle	45	50	55	%	@50%
	Rise / Fall Time (10%~90%)			10	ns	
	Load	15			pF	
Frequency Stabilities	Frequency Tolerance vs. Operating Temperature Range	-1		+1	$\times 10^{-9}$	$T_A$ varied from 0°C to 75°C, measurement referenced to frequency observed with $f_{ref}=(f_{max}+f_{min})/2, V_{cc}=12V, O_{load}=15pF$ , temperature variable speed less than 2°C per minute.
	Initial Frequency Tolerance	-0.03		+0.03	$\times 10^{-6}$	Measurement referenced to frequency observed with $T_A=25^\circ C, V_{cc}=12V, V_c=2.5V$ , and after 15 minutes of operation, at time of shipment.
	Frequency Tolerance vs. supply voltage	-0.5		+0.5	$\times 10^{-9}$	measurement referenced to frequency observed $T_A=25^\circ C, V_{cc}$ varied from 11.4V to 12.6V, $V_c=2.5V, O_{load}=15pF$
	Frequency Tolerance vs. Load	-0.5		+0.5	$\times 10^{-9}$	5% Load Change Measurement referenced to frequency observed with $T_A=25^\circ C, V_{cc}=12V, V_c=2.5V, O_{load}=15pF$ .
	Short-Term Stability: Allan Variance		0.0005		$\times 10^{-9}$	Temperature stability, no EMI/EMC or other interference, test after power for 1hour ref. to 25°C; 1s.
	Aging Tolerance Per Day	-0.5		+0.5	$\times 10^{-9}$	$V_{cc}, V_c, T_A$ constant Measurement referenced to frequency observed with $T_A=25^\circ C, V_{cc}=12V, V_c=2.5V, O_{load}=15pF$ and after 30 days of operation.
	Aging Tolerance Per 30 Days	-5		+5	$\times 10^{-9}$	
	Aging Tolerance First Year	-0.03		+0.03	$\times 10^{-6}$	
	Aging Tolerance 15 Years	-0.5		+0.5	$\times 10^{-6}$	
	Retrace			$\pm 5$	$\times 10^{-9}$	



Power Supply	Supply Voltage	11.4	12	12.6	V	
	Steady Consumption			300	mA	@25°C
	Warm up current			800	mA	
	Warm-Up Time			10	min	@25°C within $\pm 0.1 \times 10^{-6}$ of final frequency with reference after 1hour on
	Reference Voltage	4.925	5	5.075	V	
	Reference Voltage Output Impedance			100	$\Omega$	
Voltage Control Characteristics	Tuning Voltage Range	0	2.5	5	V	
	Tuning Sensitivity	$\pm 0.15$		$\pm 0.25$	ppm/V	
	Linearity			10	%	
	Slope	Positive				
	Tuning Bandwidth	1			kHz	
	Input Impedance	10			K $\Omega$	
Phase Noise	Phase Noise @25°C			-112	dBc/Hz	1Hz
				-143		10Hz
				-158		100Hz
				-163		1KHz
				-165		10KHz
Environmental Conditions	Operating Temperature	0		+75	°C	
	Operable Temperature	0		+80	°C	
	Storage Temperature	-55		+105	°C	
	ESD Level	Human Body Model, class2: 2000V to 4000V; ANSI/ESDA/JEDEC JS-001-2010.				
		Machine Model, class B: 200V to 400V; JEDEC JESD22-A115C.				
	Moisture Sensitivity Level: Not humidity sensitive.					
	Vibration	Test Condition: 0.75mm ;acceleration:10g;10Hz~500Hz, one cycle per 30 min, test 2 hour. (3 times for each 3 directions X ,Y , Z), IEC 68-2-06 Test Fc.				
Shock	50g; 11ms; half sine wave (3 times for each 3 directions X ,Y , Z ),IEC 68-2-27 Test Ea/Severity 50A.					
Full Package Storage	Relative humidity (%)	20%~70%				
	Temperature (°C)	-10~35°C				



## 2. Mechanical Structure (mm)



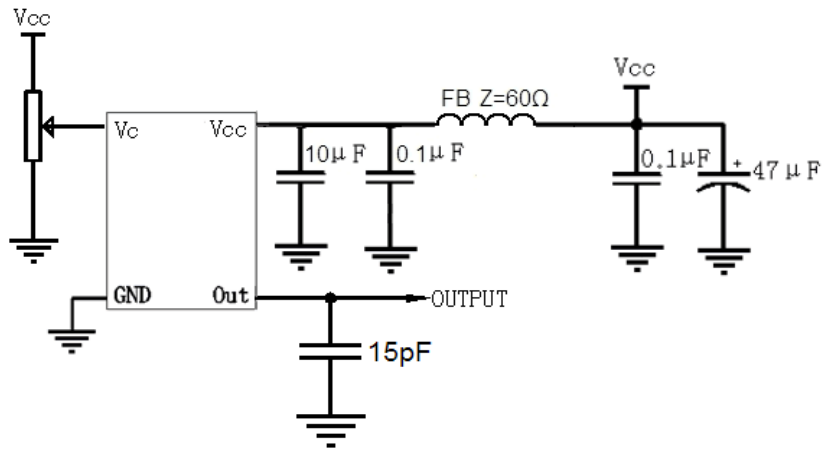
**Note1:** Tolerance ± 0.20mm without mark.

**Note2:** The first two xx representative: week.  
After two xx representative: year.

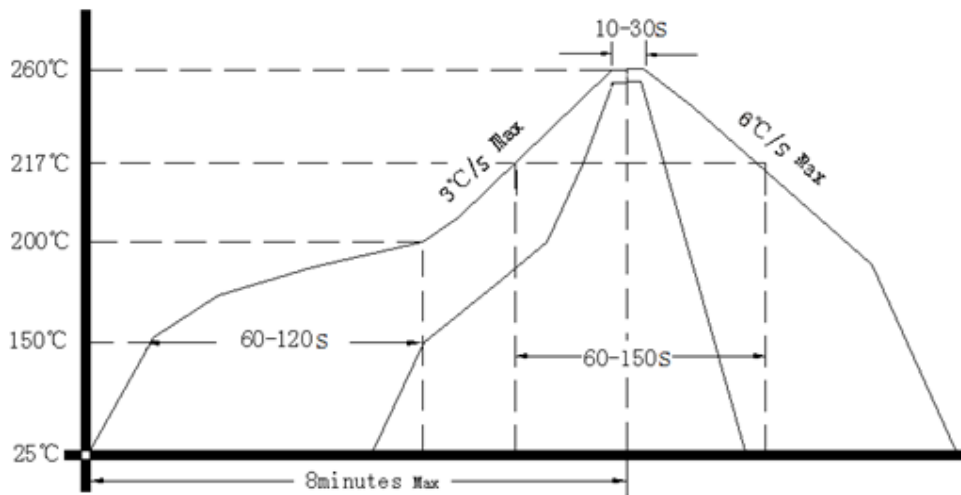
**Note3:** Referential Weight 21g.



### 3. Test Circuit



### 4. Reflow Soldering Curve (RoHS)



Note: Passing through reflow upside down is not supported

### 5. Package: Tape & Reel (mm)

