

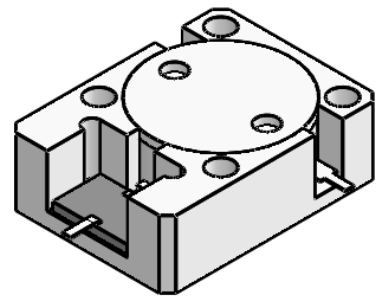


## DP2867S

### ENG PART:DP-19.1X25.4ID-925T960-CW

925MHz to 960MHz Single-Junction Drop-in Isolator

REV.	DESCRIPTION	REVISOR	DATE	APPROVED
A	SAME AS REV.1	ZC.Wu	2023/10/31	Nick

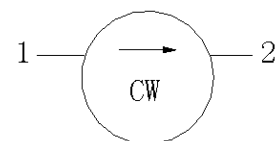


#### Applications:

- Wireless Infrastructure
- Power Amplifier

#### Features:

- Operating frequency range: 925MHz to 960MHz
- Operating temperature range: -40°C to +110°C
- Storage temperature range: -50°C to +125°C
- Small surface-mount package delivered on T&R
- BeOfree&RoHS compliant



Block Diagram



**Electrical Specifications:**

ITEM	SPECIFICATION	
Frequency	925~960	MHz
Extend frequency	-	MHz
Direction	CW	
Impedance	Typ: 50	$\Omega$
Insertion Loss (Max.)	0.25@25°C±5°C 0.28@-40°C~+110°C	dB
Isolation (Min.)	22@25°C±5°C 20.0@-40°C~+110°C	dB
Return Loss (Min.)	22.0@25°C±5°C 20.0@-40°C~+110°C	dB
3rd IMD (Max.)	-65@2X25W, CW tones spacing 1MHz	dBc
2nd harmonic	10	dB
3rd harmonic	10	dB
Power FWD/REV/PEAK	150/100/1000	W
Termination/Attenuator	150/30	W/dB
Input Impedance ,real	-	$\Omega$
Input Impedance ,imaginary	-	$\Omega$

Notes:

1. Exposure to maximum rating conditions for extended periods may reduce device reliability. There is no damage to device with only one parameter set at the limit and all other parameters set at or below their nominal value. Exceeding any of the limits listed here may result in permanent damage to the device.
2. Performance is guaranteed under the conditions listed in this table and over the operating temperature range.
3. Performance will not degrade by > 10% with operating temperature up to 130 °C.

