

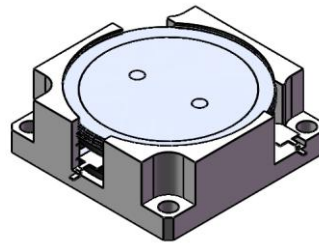


DP2691C

ENG PART:DP-31.8X31.8CD-2496T2690-CW

2496MHz to 2690MHz Single-Junction Drop-in Circulator

REV.	DESCRIPTION	REVISOR	DATE	APPROVED
A	Producing release (same as Rev.1)	ZC.Wu	2023/8/25	Nick

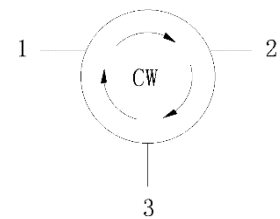


Applications:

- Wireless Infrastructure
- Power Amplifier

Features:

- Operating frequency range: 2496MHz to 2690MHz
- Operating temperature range: -40°C to +120°C
- Storage temperature range: -55°C to +155°C
- BeO free & RoHS compliant



Block Diagram

**Electrical Specifications:**

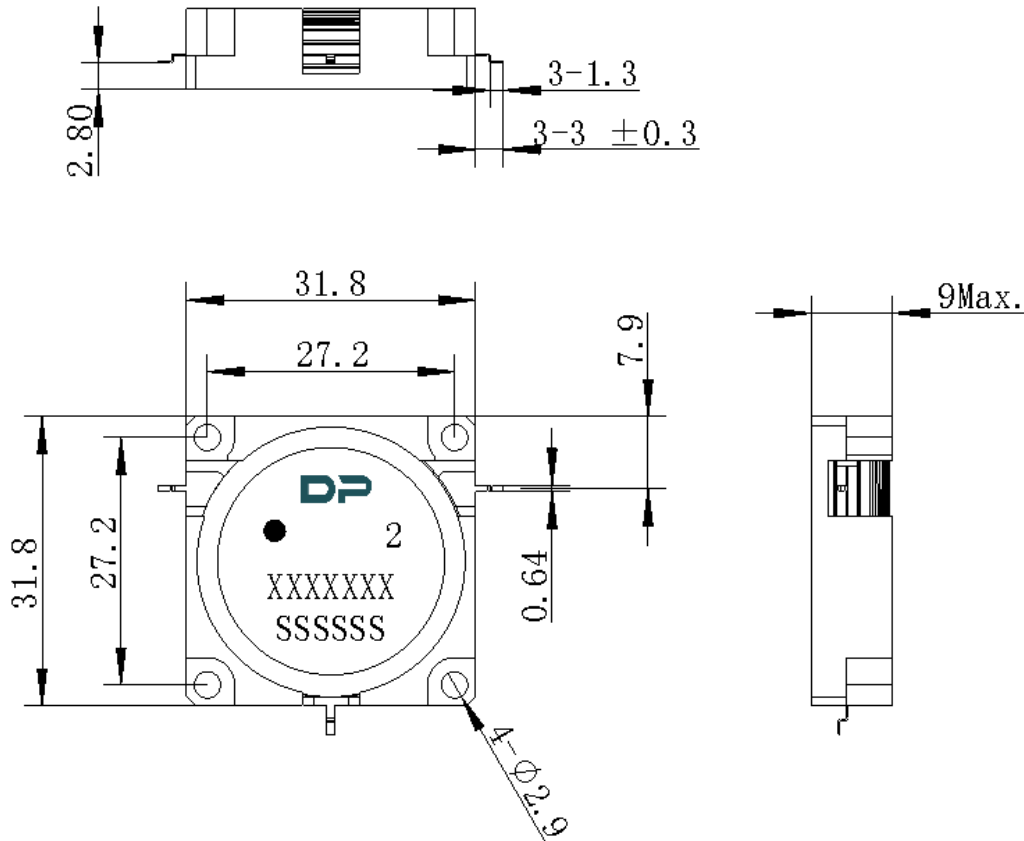
ITEM	SPECIFICATION	
Frequency	2496~2690	MHz
Extend frequency	2346~2840	MHz
Direction	CW	
Impedance	Typ: 50	Ω
Insertion Loss (Max.)	0.25	dB
Isolation (Min.)	23 14@2346~2840MHz	dB
Return Loss (Min.)	23	dB
FWD 3rd IMD (Max.)	-65@2x100W,CW tones, spacing 1MHz	dBc
Group delay	2	ns
2nd harmonic suppression	20	dBc
3rd harmonic suppression	5	dBc
Power FWD/REV/PEAK	300/-/2200	W
Ripple of group delay in extend frequency	/	ns
Input Impedance ,real	44~52 (typ. -) @2496MHz 46~54 (typ. -) @2593MHz 49~56 (typ. -) @2690MHz	Ω
Input Impedance ,imaginary	-4j~4j (typ. -) @2496MHz -2j~6j (typ. -) @2593MHz -2j~6j (typ. -) @2690MHz	Ω
Output Impedance ,real	44~52 (typ. -) @2496MHz 46~54 (typ. -) @2593MHz 49~56 (typ. -) @2690MHz	Ω
Output Impedance ,imaginary	-4j~4j (typ. -) @2496MHz -2j~6j (typ. -) @2593MHz -2j~6j (typ. -) @2690MHz	Ω
Out-off-band resonance point	Resonance point away 2096 MHz to 3090 MHz	

Notes:

1. Exposure to maximum rating conditions for extended periods may reduce device reliability. There is no damage to device with only one parameter set at the limit and all other parameters set at or below their nominal value. Exceeding any of the limits listed here may result in permanent damage to the device.
2. Performance is guaranteed under the conditions listed in this table and over the operating temperature range.



Mechanical Specifications:



Unit: Millimeters

Notes:

1. The housing is nickel-plated and the circuit is silver-plated.
2. Tolerance ± 0.2 mm unless otherwise specified.
3. Co-planarity Specification: 0.1 mm maximum.
4. Part Number, Lot Code, and Port Designation are printed on the top side of device.
5. The **XXXXXXX** on the label represents the part number
6. The **SSSSSS** on the label represents the serial number
7. The black dot on the label represents the input port