

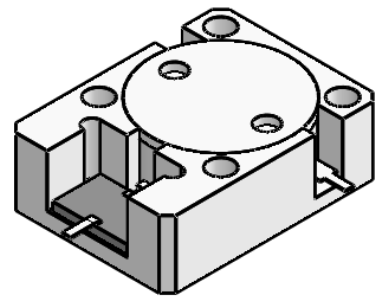


DP2774S

ENG PART:DP-19.1X25.4ID-2110T2170-CCW

2110MHz to 2170MHz Single-Junction Drop-in Isolator

REV.	DESCRIPTION	REVISOR	DATE	APPROVED
A	Creating datasheet	ZZ.Zhu	2023/8/21	Nick

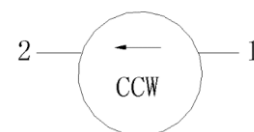


Applications:

- Wireless Infrastructure
- Power Amplifier

Features:

- Operating frequency range: 2110MHz to 2170MHz
- Operating temperature range: -40°C to +85°C
- Storage temperature range: -50°C to +125°C
- Small surface-mount package delivered on T&R
- BeOfree&RoHS compliant



Block Diagram



Electrical Specifications:

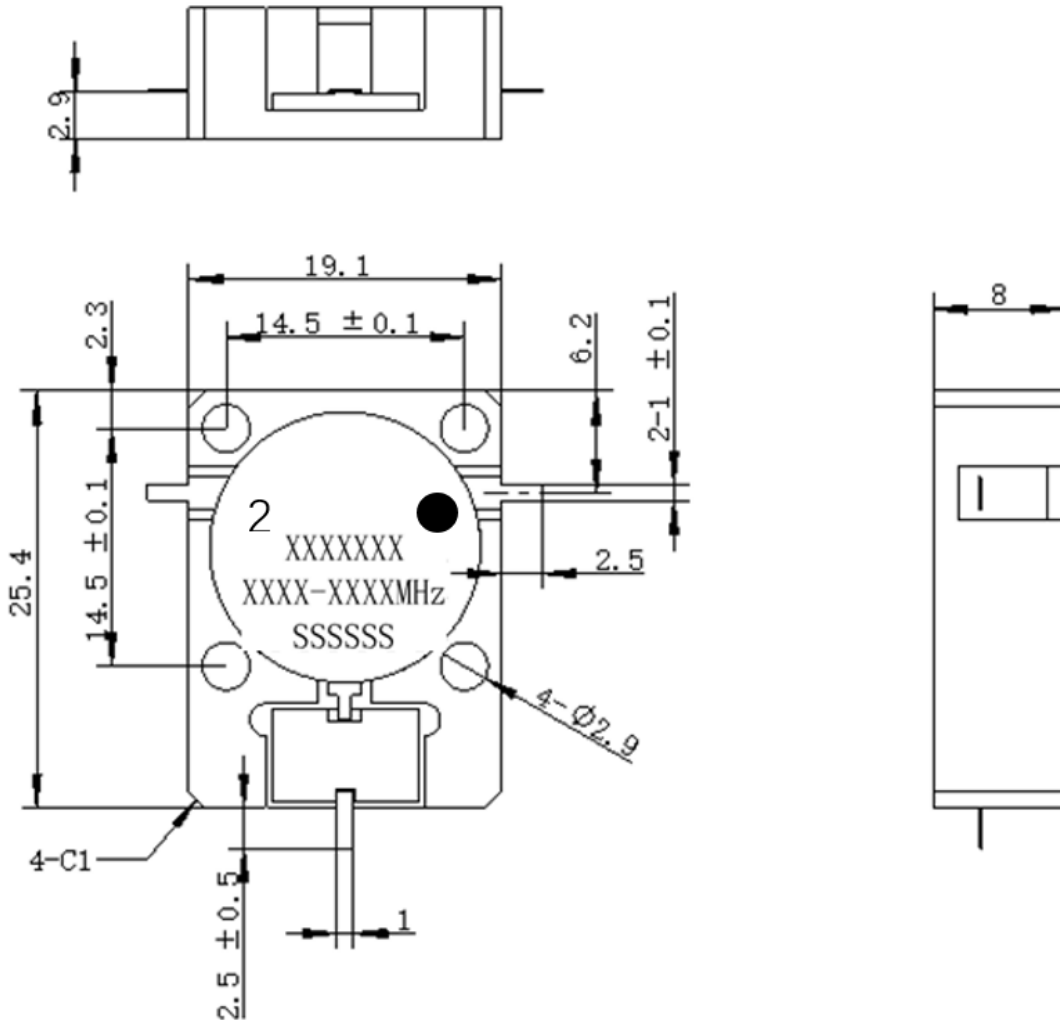
ITEM	SPECIFICATION	
Frequency	2110~2170	MHz
Extend frequency	-	MHz
Direction	CCW	
Impedance	Typ: 50	Ω
Insertion Loss (Max.)	0.20 Typ. 0.25 @-40~+85°C	dB
Isolation (Min.)	26 Typ. 22 @-40~+85°C	dB
Return Loss (Min.)	26 Typ. 22 @-40~+85°C	dB
3rd IMD (Max.)	-73 (Typ.) @2X40dBm, CW tones spacing 1MHz -70@2X40dBm, CW tones spacing 1MHz	dBc
2nd harmonic Rejection	25	dB
3rd harmonic Rejection	-	dB
Power FWD/REV/PEAK	200/150/1000	W
Termination/Attenuator	150/30	W/dB
Input Impedance ,real	-	Ω
Input Impedance ,imaginary	-	Ω

Notes:

1. Exposure to maximum rating conditions for extended periods may reduce device reliability. There is no damage to device with only one parameter set at the limit and all other parameters set at or below their nominal value. Exceeding any of the limits listed here may result in permanent damage to the device.
2. Performance is guaranteed under the conditions listed in this table and over the operating temperature range.
3. Performance will not degrade by > 10% with operatingtemperatureup to 130 °C.



Mechanical Specifications:



Unit: Millimeters

Notes:

1. The circuit is silver-plated.
2. Tolerance ±0.2mm unless otherwise specified.
3. Co-planarity Specification: 0.1mm maximum.
4. Part Number, Lot Code, and Port Designation are printed on the top side of device.
5. Part Number format shall be XXXXXXX
6. The XXXX-XXXX on the label represents the operating frequency
7. The SSSSS on the label represents the serial number
8. The black dot on the label represents the input port